

# The Olmsted Elbow Plug Valve

(patent pending)

Superior flow efficiency



*The leader in high flow, high pressure valving*

# Olmsted Capabilities for Total Customer Support

## Testing and documentation

Olmsted's test stand capabilities include:

- Flow capacity up to 20,000 GPM
- Test stand pressure rating up to 9,000 PSI
- Data sampling rate of 0.00025 sec.
- 16 channel measurement points
- Step response documentation packages
- Hydraulic flow shut-off documentation packages
- Hydraulic hose gallery to test multiple valve functions
- Embedded controls package to test closed-loop valve systems while integrated into large cylinder velocity control
- Multiple electrical interface options
- Detailed test procedures and electrical documentation results



## Engineering

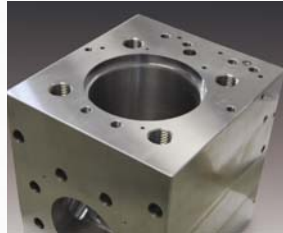
- Hydraulic analysis
- Hydraulic design
- 3D design and solid modeling
- FEA capabilities
- Real-time flow analysis and simulation
- Turnkey system solutions
- Closed-loop valve design and controls
- Engineered testing equipment
- Specialized manifold design
- Specialized materials



## The Olmsted Elbow Plug Valve - EPV

With a unique internal design that maximizes fluid flow, the Olmsted Elbow Plug Valve series offers users new levels of energy efficiency and reduced cost of operation.

Available in multiple configurations, our rugged Elbow Plug Valves are constructed of high quality components and then thoroughly tested in our modern testing facility. Each valve is designed to meet specific customer requirements.



Each Elbow Plug Valve is available as a valve retrofit—a sure way to improve the performance of your hydraulic system. And Olmsted offers a factory rebuild and exchange program in support of our customers' uptime.

Applications:

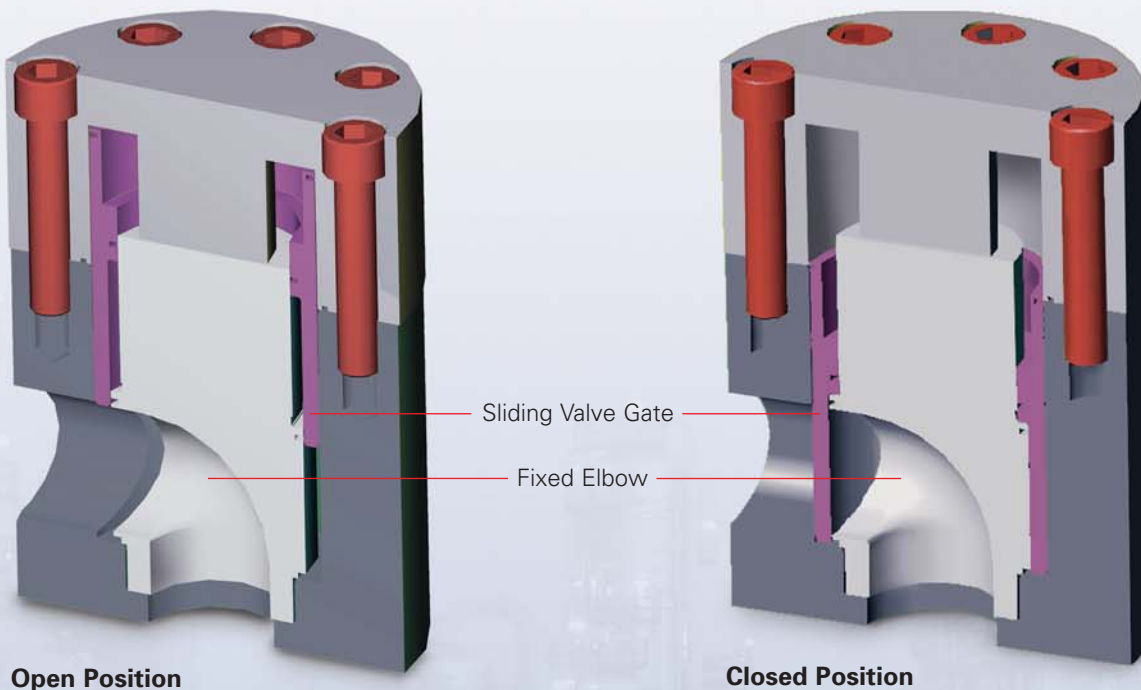
- Mining
- Subsea
- Water hydraulics
- Marine
- Presses
- Diecasting
- Offshore oil and gas

Advantages:

- Reduced pressures
- More compact manifold sizes
- Lower energy use
- Reduction in load variation
- Faster response
- Improved cycle times
- Cost reduction
- Sizes from 16mm to more than 350mm

---

### Elbow Plug Valve



**Open Position**

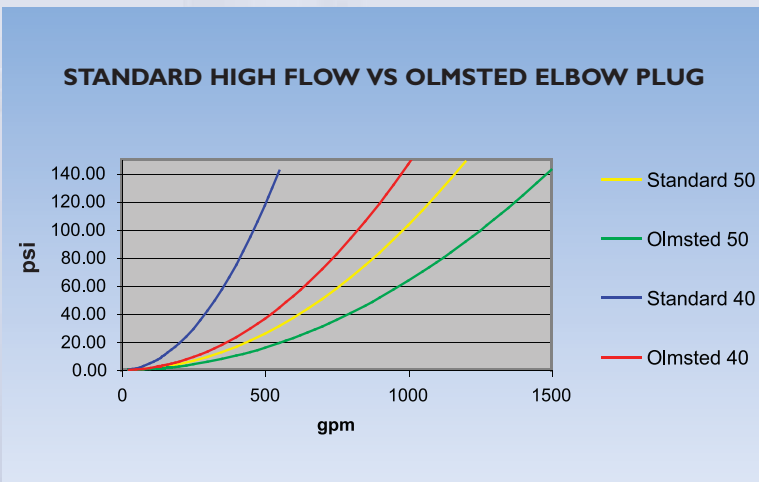
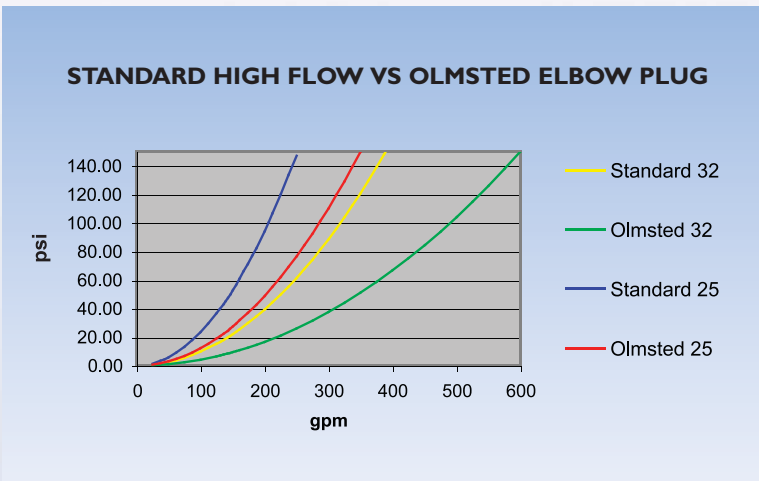
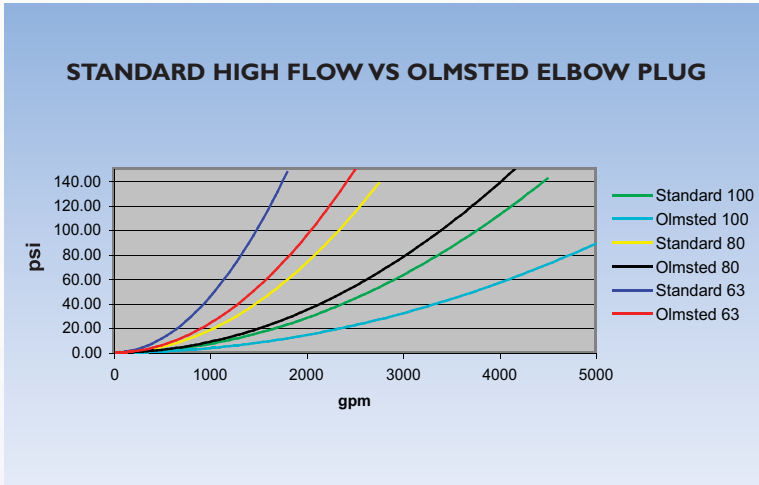
**Closed Position**

- ABS/DNV type approved designs
- DIN standard cartridge cavity or other custom cavity
- Low leakage
- Multiple sizes available
- High speed functionality

- Increased efficiency
- Ex Rated electrical components
- Proximity switch option available
- Specialized materials available
- Multiple configurations

## Superior pressure-to-flow ratios

Below is a representation of the Olmsted Elbow Plug Valve performance compared to conventional cartridge valves.



## 24/7 Service Supports Your Uptime

### Service/Repair

Olmsted employs a highly trained staff of service technicians who are available anytime worldwide to carry out multiple tasks on any and all of our products, including installation, troubleshooting, commissioning, and preventative maintenance.

### On call

Immediate support is available at all times. You can contact us 24 hours a day, 7 days a week to help resolve any operational issues.



### Maintenance

Olmsted offers factory-based or onsite preventative maintenance program can be arranged for all our products.

Service repair programs can be provided on request.



### Repair

When a valve is sent in for repair, Olmsted inspects and diagnoses the issue as quickly as possible. When the repair is completed, the valve is tested to ensure

that it returns to the customer fit for the purpose for which it was designed.

### Parts

Olmsted maintains a large spare part inventory to provide the best possible support to our customers. Parts can be supplied at short notice to minimize customer downtime.



## Ordering is simple

### Ordering the Olmsted Directional Elbow Plug Valve

Developing your part number:

|                  |            |  |                       |             |               |
|------------------|------------|--|-----------------------|-------------|---------------|
| <b>EPV</b>       |            |  | <b>D</b>              |             | <b>XX</b>     |
| Elbow Plug Valve | Valve Size | Area Ratio                             | Cartridge Directional | Seals       | Design Series |
|                  | 16         | A   1:1                                |                       | V   Viton   |               |
|                  | 25         | B   2:1                                |                       | B   Buna    |               |
|                  | 32         | Other area ratios available on request |                       | N   Nitrile |               |
|                  | 40         |  |                       |             |               |
|                  | 50         |  |                       |             |               |
|                  | 63         |  |                       |             |               |
|                  | 80         |  |                       |             |               |
|                  | 100... 350 |  |                       |             |               |

### Ordering the Olmsted Relief Elbow Plug Valve

Developing your part number:

|                  |            |  |                  |             |               |
|------------------|------------|--|------------------|-------------|---------------|
| <b>EPV</b>       |            |  | <b>R</b>         |             | <b>XX</b>     |
| Elbow Plug Valve | Valve Size | Area Ratio                             | Cartridge Relief | Seals       | Design Series |
|                  | 16         | A   1:1                                |                  | V   Viton   |               |
|                  | 25         | B   2:1                                |                  | B   Buna    |               |
|                  | 32         | Other area ratios available on request |                  | N   Nitrile |               |
|                  | 40         |  |                  |             |               |
|                  | 50         |  |                  |             |               |
|                  | 63         |  |                  |             |               |
|                  | 80         |  |                  |             |               |
|                  | 100... 350 |  |                  |             |               |

Other valve configurations include:

- Servo
- Proportional
- Velocity fuse
- Pulse sensing
- Large manifold systems (custom)

## **Olmsted Products Co.**

For more than 40 years, Olmsted Products Co. has been designing and manufacturing quality high-flow, high-pressure valving with flows in excess of 20,000 GPM and pressures in excess of 9,000 PSI.

Olmsted designs rugged, reliable valves for industrial, marine, and offshore applications. Whether it is a cartridge, manifold-mounted, or inline model valve, Olmsted has the ability to design the valve to fit your specific requirements.



1424 International Dr.  
Traverse City, MI 49686 USA  
Tel: (231) 929-1660  
Fax: (231) 929-7879  
e-mail: [hydraulics@olmstedproducts.com](mailto:hydraulics@olmstedproducts.com)  
**[www.olmstedproducts.com](http://www.olmstedproducts.com)**