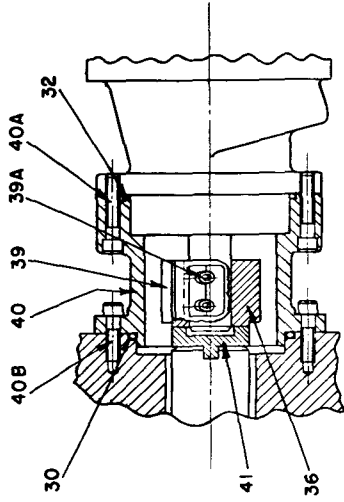
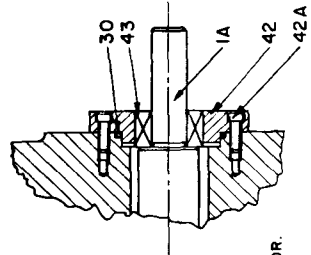




OILGEAR TYPE "B-241I" CONSTANT DISPLACEMENT MOTORS

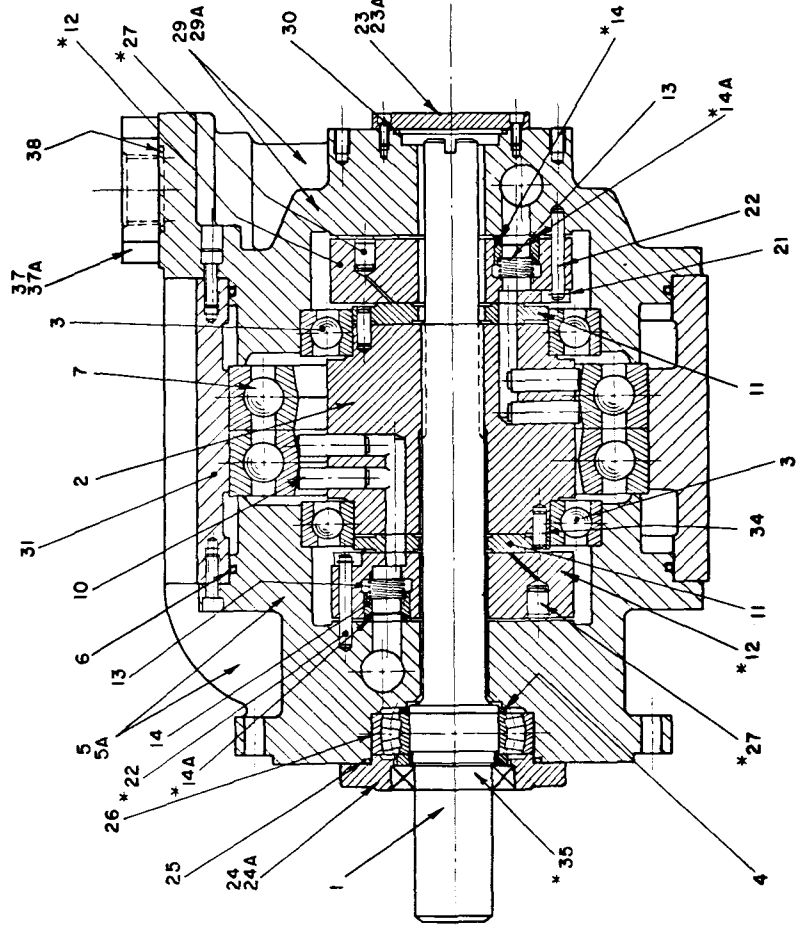
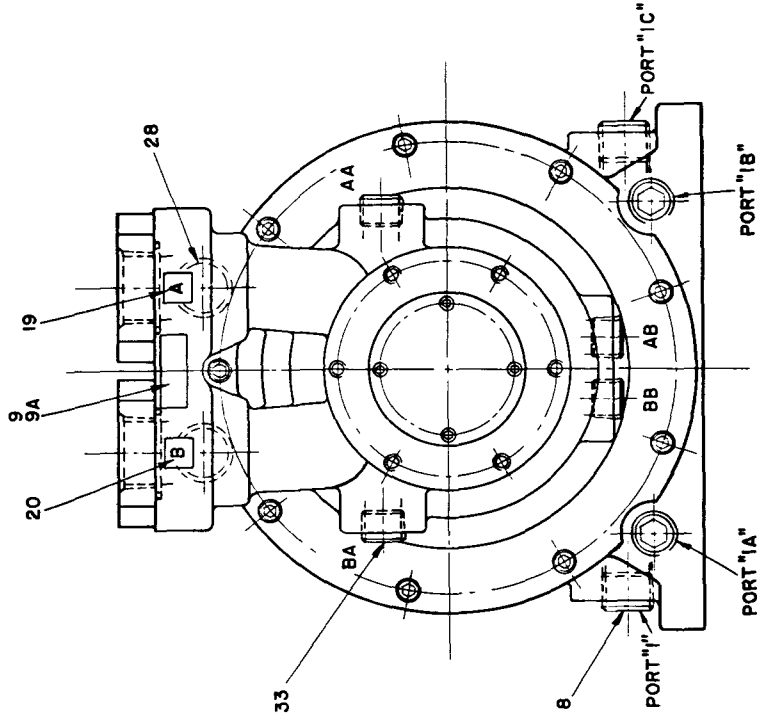
V-681105	DR. APPR. CH. 501	TR.
PARTS DRAWING		
OILGEAR TYPE "B-241I" MOTORS		

NOTE!
 WHEN ORDERING MOTOR REPAIR PARTS BE SURE TO INCLUDE MOTOR SERIAL NUMBER, DATA SHEET NUMBER AND PART NUMBER.
 WHEN ORDERING REPLACEMENT O'RINGS, SPECIFY * TYPE OF HYDRAULIC FLUID USED.
 * PARTS 12 & 27, 14B, 14A, & 35 FURNISHED AS ASSEMBLY ONLY.
 CONNECT CASE DRAIN, PORT "I", SO THE MOTOR IS KEPT FULL OF OIL AT ALL TIMES. FILL MOTOR CASE WITH OIL BEFORE STARTING MOTOR.



MOUNTING FOR TACHOMETER SERVICE.

MOTOR WITH REAR SHAFT EXTENSION



LITNO IN U.S.A. 50118

REISSUED: JAN., 1961

THE OILGEAR COMPANY
 MILWAUKEE 4, WISCONSIN, U.S.A.

DS-956780-A

PARTS LIST
OILGEAR TYPE "B-2411" MOTOR

PART NO.	DESCRIPTION	PART NO.	DESCRIPTION
1.	Shaft, Drive	25.	Packing, O'Ring
1A.	Shaft, Drive	26.	Bearing, Drive Shaft
2.	Cylinder	*27.	Piston, Compensating
3.	Bearing, Ball	28.	Packing, O'Ring
4.	Ring, Retaining	29.	Housing, Rear
5.	Housing, Front	29A.	Screw, Sock. Hd. Cap
5A.	Screw, Sock. Hd. Cap	30.	Packing, O'Ring
6.	Packing, O'Ring	31.	Case, Motor
7.	Bearing, Thrust	32.	Packing, O'Ring
8.	Plug, 1" Pipe	33.	Plug, 3/4" Pipe
9.	Plate, Name	34.	Pin, Dowel
9A.	Screw, Drive	*35.	Assembly, Shaft Seal
10.	Piston, Motor	36.	Coupling
11.	Plate, Wear	37.	Flange, Port
*12.	Valve, Flat	37A.	Screw, Sock. Hd. Cap
13.	Springs, Hold-up Piston	38.	Packing, O'Ring
*14.	Piston, Hold-up	39.	Key, Coupling
*14A.	Tumbler, Hold-up Piston	39A.	Screw, Sock. Hd. Cap
19.	Decal, Port "B"	40.	Housing, Coupling
20.	Decal, Port "A"	40A.	Screw, Sock. Hd. Cap
21.	Ring, Retaining	40B.	Screw, Sock. Hd. Cap
22.	Pin, Locating	41.	Key, Coupling
23.	Cover, Rear Shaft	42.	Gland, Rear Head
23A.	Screw, Sock. Hd. Cap	42A.	Screw, Sock. Hd. Cap
24.	Gland, Seal	43.	Assembly, Seal
24A.	Screw, Sock. Hd. Cap		

*Parts 12 & 27, 14 & 14A, & 35 furnished as assemblies only. When ordering replacement parts include motor serial number, data sheet number and part number. Specify type of hydraulic fluid for O'Rings and seals.

O ' R I N G S I Z E S

PART NO.	CROSS SECTION	x	I. D.	x	O. D.	DURO ± 5
6.	1/4	x	11	x	11-1/2	90
25.	1/8	x	4-1/2	x	4-3/4	90
28.	1/8	x	1-3/8	x	1-5/8	90
30.	1/8	x	2-3/4	x	3	90
32.	1/8	x	2-7/8	x	3-1/8	90
38.	1/8	x	2	x	2-1/4	90