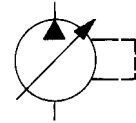
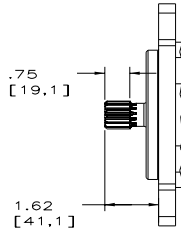


"B2" FRAME

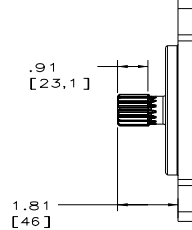


Installation Drawing Basic Pump Without Control - Side Ported

OPTIONAL SAE "B" SPLINE SHAFT
(SAE "22-4")
VIEW SHOWING OPTIONAL SPLINE SHAFT
SAE INVOLUTE SPLINE 13 TEETH, 16/32 PITCH
.859-.005[21.82-.13] MAJOR DIA.



OPTIONAL SAE "B" SPLINE SHAFT
(SAE "25-4")
VIEW SHOWING OPTIONAL SPLINE SHAFT
SAE INVOLUTE SPLINE 15 TEETH, 16/32 PITCH
.984-.005[25.00-.13] MAJOR DIA.



- NOTES:
1. PUMPS DESIGNED FOR ONE-WAY SERVICE ARE DIMENSIONED AS SHOWN.
 2. NUMERICAL DIMENSIONS GIVEN IN INCHES/[MM].

3. THESE UNITS ARE DESIGNED TO RUN CASE FULL OF FLUID AT ALL TIMES. FILL CASE BEFORE STARTING AND CONNECT DRAIN LINES ACCORDINGLY.
4. NET WEIGHT - 55 LBS. [25 KG].

