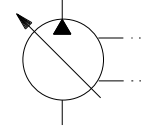


" A1 "

" P-C " "P-K" CONTROL



INSTALLATION DRAWING Soft Start w/ Single Pressure Compensator Control

NOTES:

1. PUMPS DESIGNED FOR ONE-WAY SERVICE AND ARE DIMENSIONED AS SHOWN.
2. THESE UNITS ARE DESIGNED TO RUN CASE FULL OF FLUID AT ALL TIMES. FILL CASE BEFORE STARTING AND CONNECT DRAIN LINES ACCORDINGLY.
3. NUMERICAL DIMENSIONS GIVEN IN INCHES/[MM].
4. NET WEIGHT- 183 LBS [84 KG] FOR VERSION SHOWN
198 LBS [91 KG] FOR THRU SHAFT VERSION.

