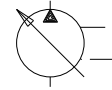
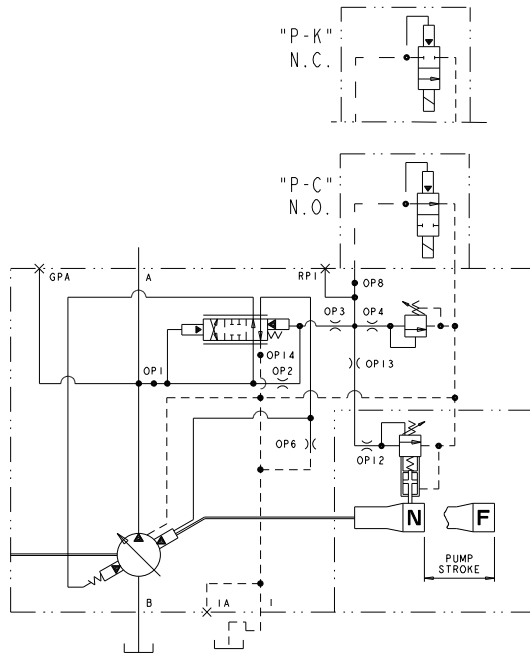


" F1 "

" P-C**/H " P-K**/H CONTROL



INSTALLATION DRAWING Soft Start w/ Single Pressure Compensator Control & Horsepower Limiter

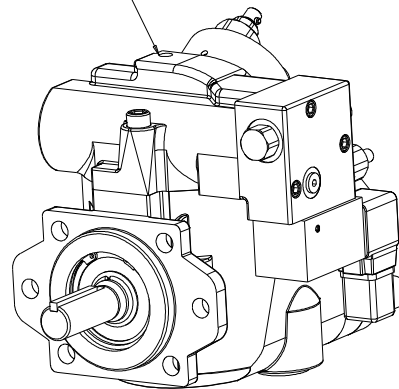


HYDRAULIC CIRCUIT

NOTES:

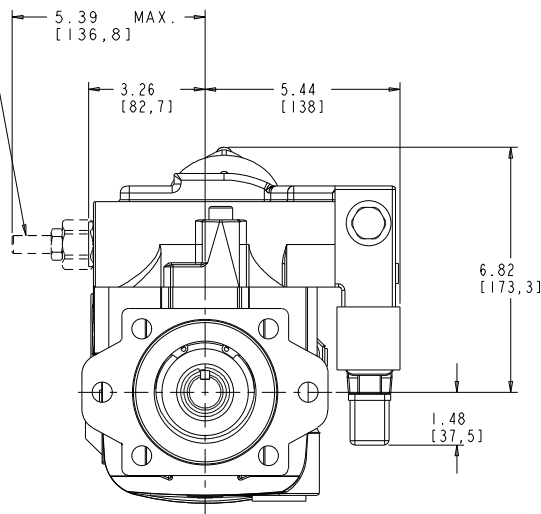
1. PUMPS DESIGNED FOR ONE-WAY SERVICE AND ARE DIMENSIONED AS SHOWN.
2. THESE UNITS ARE DESIGNED TO RUN CASE FULL OF FLUID AT ALL TIMES. FILL CASE BEFORE STARTING AND CONNECT DRAIN LINES ACCORDINGLY.
3. NUMERICAL DIMENSIONS GIVEN IN INCHES/[MM].
4. NET WEIGHT- 82 LBS [34 KG] FOR VERSION SHOWN
86 LBS [36 KG] FOR SIDE PORT VALVE PLATE
91 LBS [39 KG] FOR THRU SHAFT VERSION.

LIFTING HOLE
.375-16UNC-2B

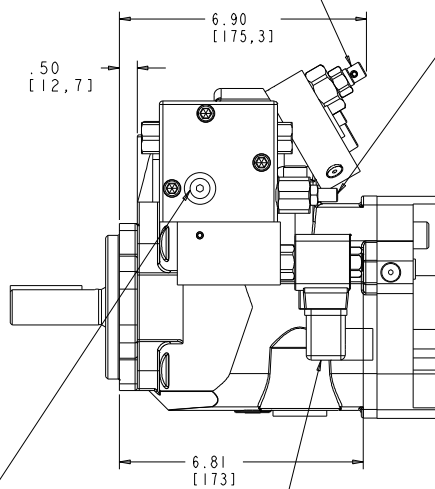


OPTIONAL MAXIMUM VOLUME STOP
.250" [6.3 mm] INTERNAL HEX
1 TURN CW DECREASES DELIVERY 8% (065/075) 11% (048)
RANGE: 100% TO 0%
FACTORY SET TO MAXIMUM VOLUME
UNLESS SPECIFIED OTHERWISE.

HIGH PRESSURE COMPENSATOR ADJUSTMENT
.188" [4.8 mm] INTERNAL HEX
1 TURN CW INCREASES PRESSURE SETTING 1000 PSI.
RANGE: 300 TO 3750 PSI (075) 5000 PSI (048/065)



HORSEPOWER LIMITER
ADJUSTER - FACTORY SET



REMOTE PORT RPI
#4 SAE STRAIGHT THD.
(PLUGGED)
(.438-20 UNF-2B TAP)

SOFT START SOLENOID
DIN 43650 ELECTRICAL CONN.

FOR BASIC PUMP DIMENSIONS
SEE PLANOGRAPHS;
DS-47952, DS-47953 & DS-47954