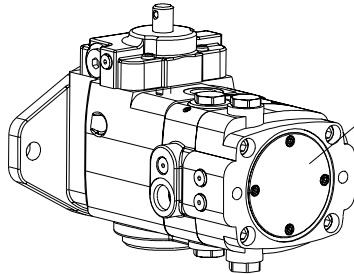
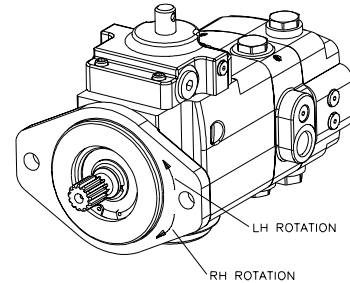


**Installation Drawing**

**SAE "B" MOUNTING**



COVER PLATE  
(OPTIONAL)

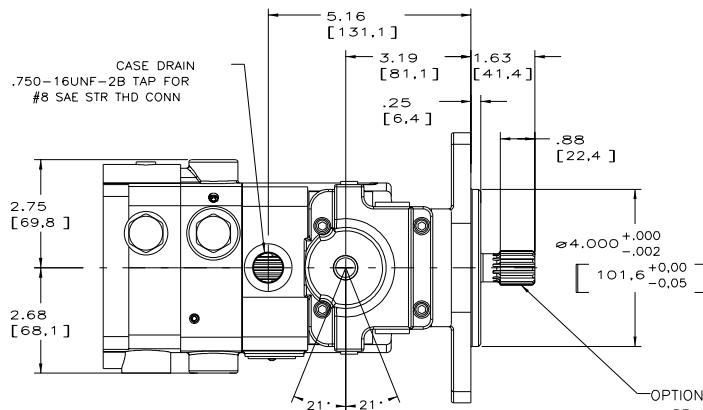


LH ROTATION

RH ROTATION

**GENERAL NOTES:**

- 1) PUMPS ARE DESIGNED FOR TWO-WAY SERVICE
- 2) THESE UNITS ARE DESIGNED TO RUN WITH CASE FULL OF FLUID AT ALL TIMES. FILL CASE BEFORE STARTING AND CONNECT DRAIN LINES ACCORDINGLY.
- 3) NUMERICAL DIMENSIONS GIVEN IN INCHES/[MM].
- 4) TOTAL WEIGHT = 38 LBS (17,3 KG)

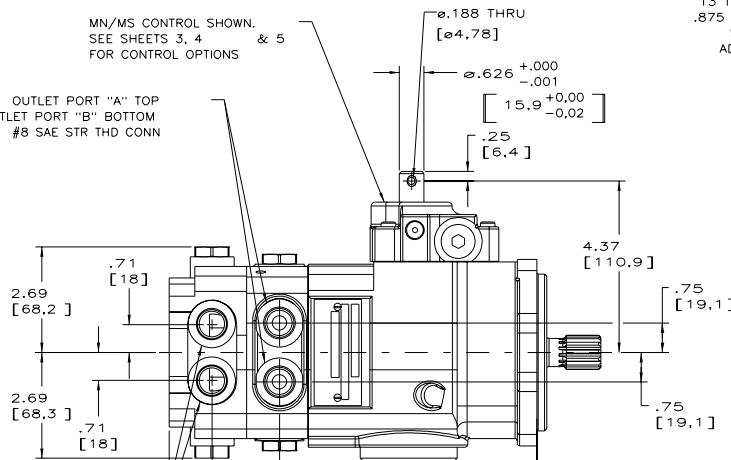


CASE DRAIN  
.750-16UNF-2B TAP FOR  
#8 SAE STR THD CONN

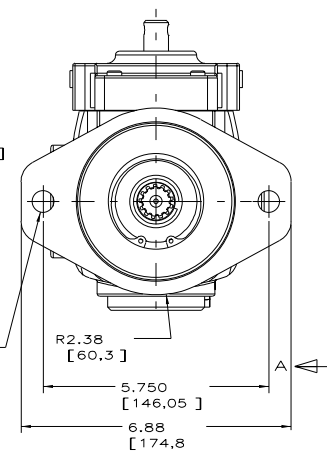
OPTIONAL SAE "B"  
SPLINE SHAFT  
CODE L  
SAE INVOLUTE SPLINE  
13 TEETH, 16/32 PITCH  
.875 [22.23] MAJOR DIA  
SEE SHEET 2 FOR  
ADDITIONAL SHAFTS

MN/MS CONTROL SHOWN.  
SEE SHEETS 3, 4 & 5  
FOR CONTROL OPTIONS

OUTLET PORT "A" TOP  
OUTLET PORT "B" BOTTOM  
#8 SAE STR THD CONN

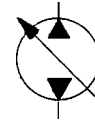


CHARGE PUMP  
#8 SAE STR THD CONN  
LH: TOP PORT OUTLET  
BOTTOM PORT INLET  
RH: BOTTOM PORT OUTLET  
TOP PORT INLET



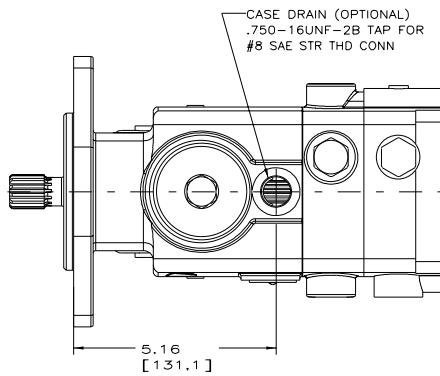
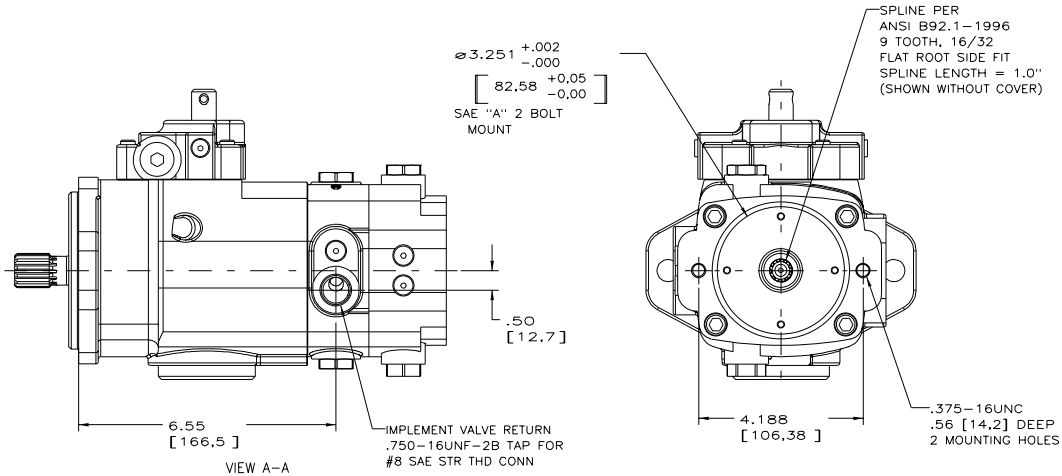
NOTE: DIMENSIONS SHOWN IN [ ] ARE IN MILLIMETERS

E60330-006 sh. 1



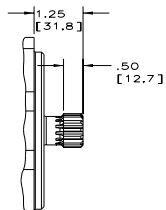
**Installation Drawing**

**SAE "B" MOUNTING**



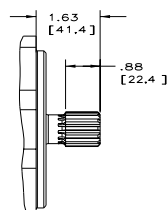
**SHAFT OPTIONS**

OPTIONAL SAE "B"  
SPLINE SHAFT  
CODE K



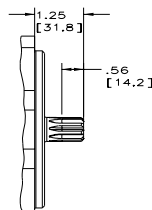
VIEW SHOWING OPTIONAL  
SPLINE SHAFT  
SAE INVOLUTE SPLINE  
13 TEETH, 16/32 PITCH  
.875 [22.23] MAJOR DIA

OPTIONAL SAE "B"  
SPLINE SHAFT  
CODE L (SPECIAL)



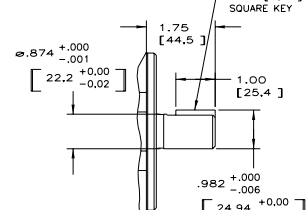
VIEW SHOWING OPTIONAL  
SPLINE SHAFT  
SAE INVOLUTE SPLINE  
13 TEETH, 16/32 PITCH  
.875 [22.23] MAJOR DIA  
SPECIAL - CLASS 5 FIT

OPTIONAL SAE "A"  
SPLINE SHAFT  
CODE S



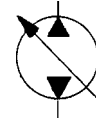
VIEW SHOWING OPTIONAL  
SPLINE SHAFT  
SAE INVOLUTE SPLINE  
9 TEETH, 16/32 PITCH  
.611 [15.52] MAJOR DIA

OPTIONAL SAE "B"  
KEYED SHAFT  
CODE Y



VIEW SHOWING  
OPTIONAL KEYED  
SHAFT

E60330-006 sh. 2



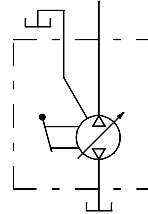
**Installation Drawing**

**SAE "B" MOUNTING**

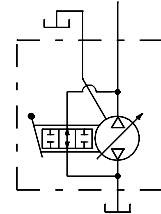
**MANUAL CONTROLS**

MN AND MS  
CONTROL FUNCTIONS:

- RIGHT HAND ROTATION PUMP (CW)**  
 -CLOCKWISE PINTLE ROTATION INCREASES FLOW FROM OUTLET PORT "B"  
 -COUNTERCLOCKWISE PINTLE ROTATION INCREASES FLOW FROM OUTLET PORT "A"
- LEFT HAND ROTATION PUMP (CCW)**  
 -CLOCKWISE PINTLE ROTATION INCREASES FLOW FROM OUTLET PORT "A"  
 -COUNTERCLOCKWISE PINTLE ROTATION INCREASES FLOW FROM OUTLET PORT "B"

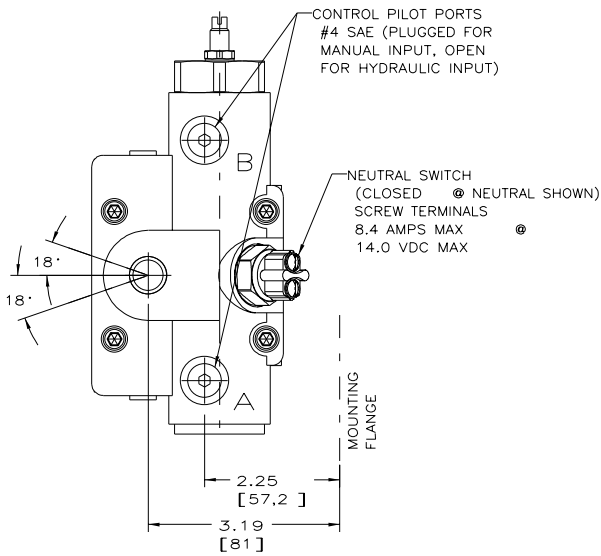


\* MN CONTROL



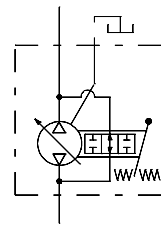
\* MS CONTROL

**CENTER ASSIST CONTROL**

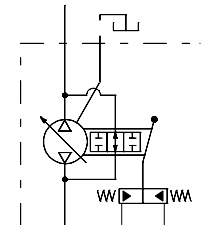


CA CONTROL FUNCTION:

- RIGHT HAND ROTATION PUMP (CW)**  
 -CLOCKWISE PINTLE ROTATION INCREASES FLOW FROM OUTLET PORT "B"  
 -COUNTERCLOCKWISE PINTLE ROTATION INCREASES FLOW FROM OUTLET PORT "A"  
 -PILOT PRESSURE TO PILOT PORT "A" INCREASES FLOW FROM OUTLET PORT "A"  
 -PILOT PRESSURE TO PILOT PORT "B" INCREASES FLOW FROM OUTLET PORT "B"
- LEFT HAND ROTATION PUMP (CCW)**  
 -CLOCKWISE PINTLE ROTATION INCREASES FLOW FROM OUTLET PORT "A"  
 -COUNTERCLOCKWISE PINTLE ROTATION INCREASES FLOW FROM OUTLET PORT "B"  
 -PILOT PRESSURE TO PILOT PORT "B" INCREASES FLOW FROM OUTLET PORT "A"  
 -PILOT PRESSURE TO PILOT PORT "A" INCREASES FLOW FROM OUTLET PORT "B"

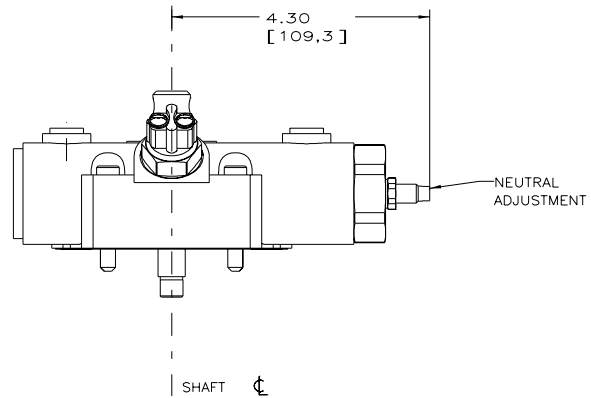
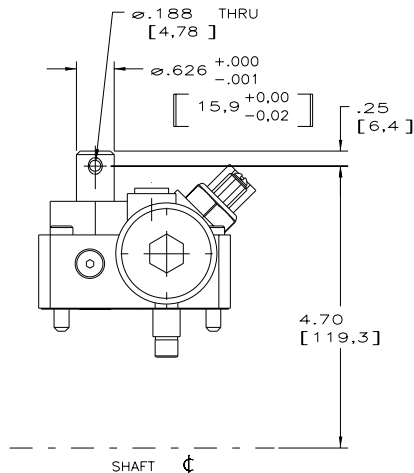


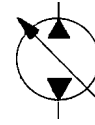
MECHANICAL



HYDRAULIC

E60330-005 sh. 3

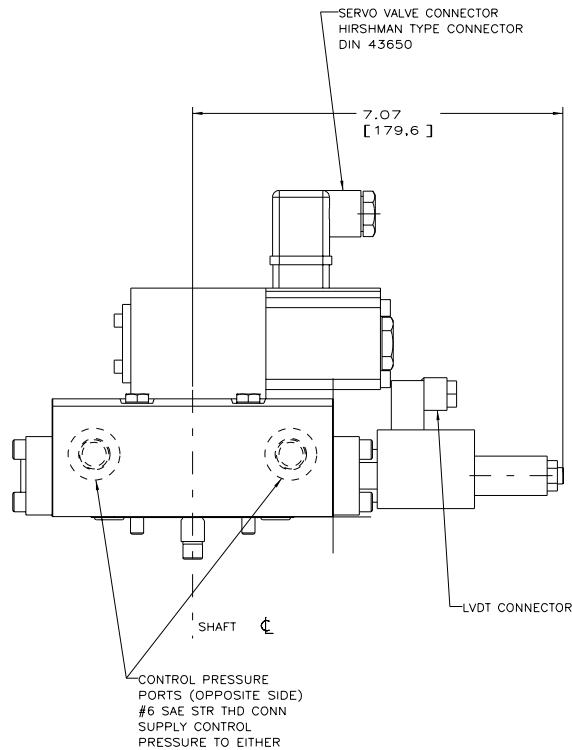
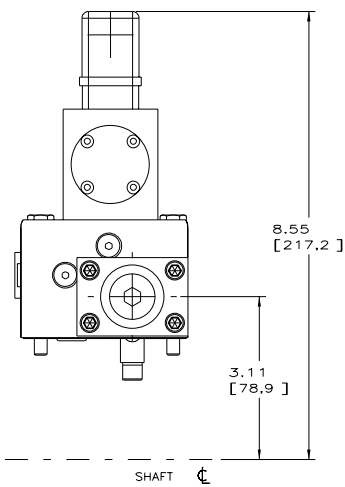
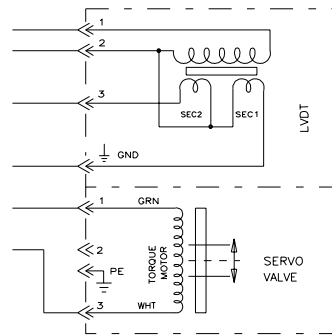
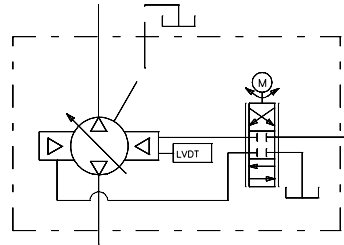
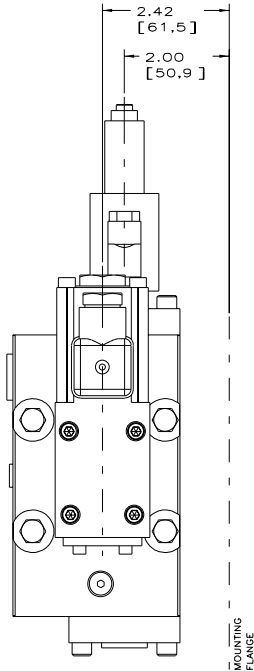




**Installation Drawing**

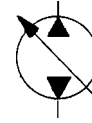
**SAE "B" MOUNTING**

**VM CONTROL**



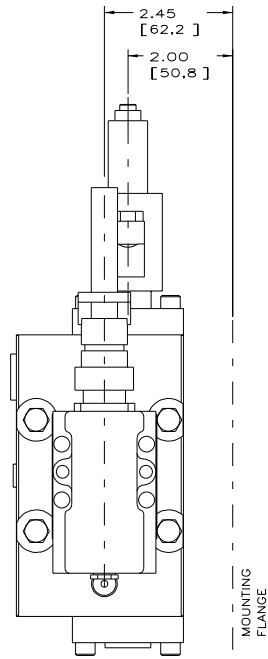
E60330-005 sh. 4

**HYDROSTATIC**

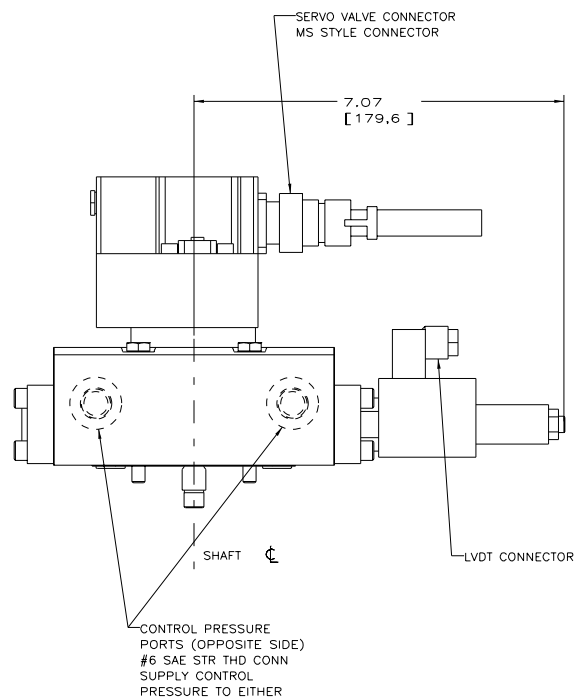
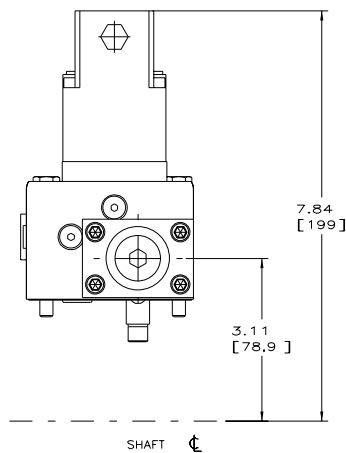
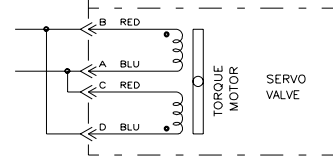
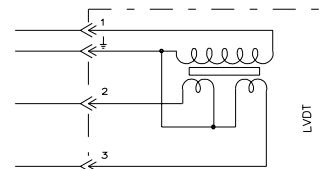
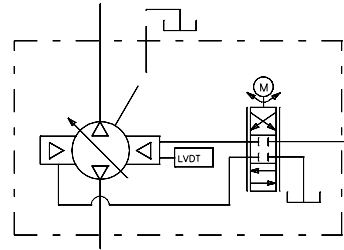


**Installation Drawing**

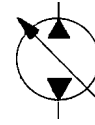
**SAE "B" MOUNTING**



**VS CONTROLS**



E60330-005 sh. 5



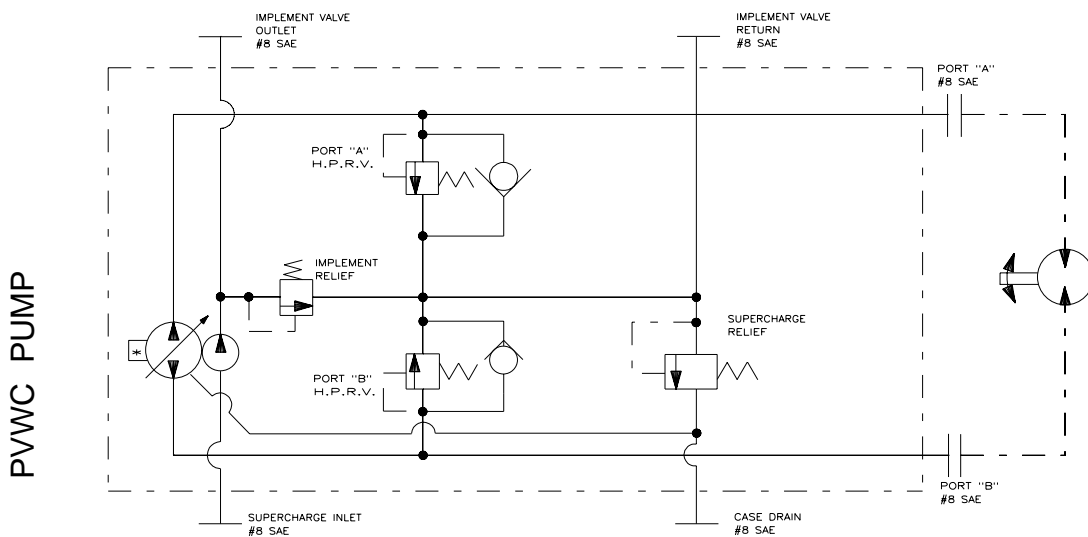
**Installation Drawing**

**SAE "B" MOUNTING**

**SPECIFICATIONS**

	PUMP MODEL		
	PVWC-011	PVWC-014	PVWC-022
MAX PISTON PUMP DISPLACEMENT	0.66 CIPR (10,8 CC/REV)	0.86 CIPR (14,1 CC/REV)	1.35 CIPR (22,1 CC/REV)
OPERATING PRESSURE RATED CONTINUOUS MAX INTERMITTENT (10% OF DUTY) PEAK	4000 PSI (275 BAR) 4500 PSI (310 BAR) 5000 PSI (350 BAR)	4000 PSI (275 BAR) 4500 PSI (310 BAR) 5000 PSI (350 BAR)	3000 PSI (206 BAR) 3500 PSI (241 BAR) 5000 PSI (350 BAR)
OUTPUT FLOW (SEE NOTE 1) (@ 1800 RPM & RATED CONT. PRESSURE)	4.1 GPM (15,5 L/MIN)	5.4 GPM (20,4 L/MIN)	8.5 GPM (32,2 L/MIN)
INPUT SHAFT SPEED MINIMUM CONTINUOUS INTERMITTENT	600 RPM 3600 RPM 4000 RPM	600 RPM 3600 RPM 4000 RPM	600 RPM 3600 RPM 4000 RPM
CHARGE PRESSURE (@ 1800 RPM) NOMINAL MINIMUM	75 PSI (5 BAR) 30 PSI (2 BAR)	75 PSI (5 BAR) 30 PSI (2 BAR)	75 PSI (5 BAR) 30 PSI (2 BAR)
CASE PRESSURE MAX CONTINUOUS MAX INTERMITTENT	15 PSI (1 BAR) 100 PSI (7 BAR)	15 PSI (1 BAR) 100 PSI (7 BAR)	15 PSI (1 BAR) 100 PSI (7 BAR)
HYDRAULIC FLUID TEMP (@ PUMP INLET) MINIMUM MAXIMUM	-40°F (-40°C) 200°F (95°C)	-40°F (-40°C) 200°F (95°C)	-40°F (-40°C) 200°F (95°C)
CHARGE PUMP DISPLACEMENT (OPTIONAL)	.425 CIPR (7 CC/REV)	.425 CIPR (7 CC/REV)	.425 CIPR (7 CC/REV)
OPERATING PRESSURE RATED CONTINUOUS MAX INTERMITTENT (10% OF DUTY)	1000 PSI (69 BAR) 1450 PSI (100 BAR)	1000 PSI (69 BAR) 1450 PSI (100 BAR)	1000 PSI (69 BAR) 1450 PSI (100 BAR)

NOTE 1: OUTPUT FLOW BASED ON ISO 46 HYDRAULIC FLUID @ 125°F



E60330-005 sh. 6

PVWC PUMP