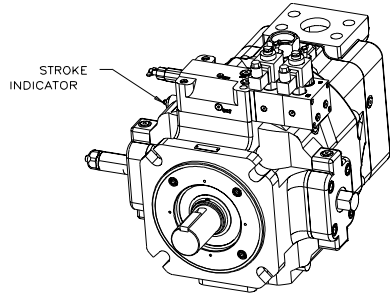


Installation Drawing

Triple Pressure Compensator Controls

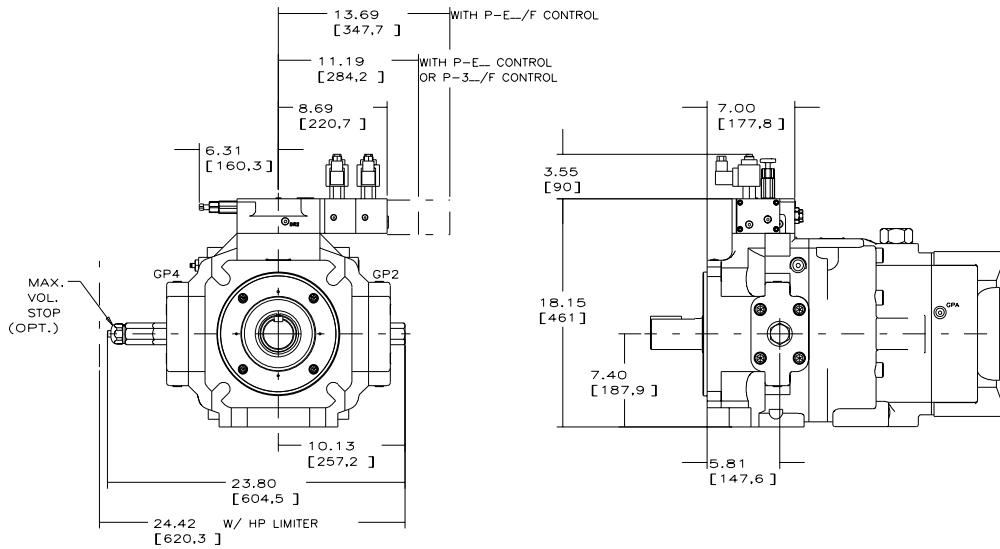
PVV-540-BIU PUMP
WITH P-3 CONTROL (SHOWN)
AND P-E CONTROL



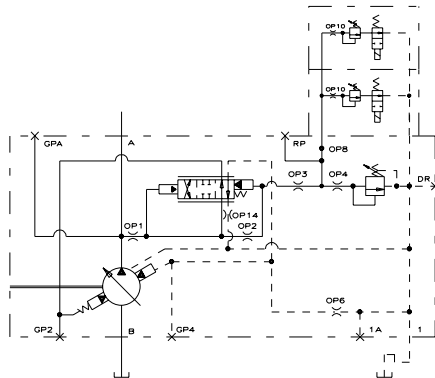
NOTES:

1. PUMPS DESIGNED FOR ONE-WAY SERVICE ARE DIMENSIONED AS SHOWN.
2. THESE UNITS ARE DESIGNED TO RUN CASE FULL OF FLUID AT ALL TIMES. FILL CASE BEFORE STARTING AND CONNECT DRAIN LINES ACCORDINGLY.
3. NUMERICAL DIMENSIONS ARE GIVEN IN INCHES/[MM].
4. NET WEIGHT: P-3 CONTROL
830 LBS (377 KG) SIDE PORTED (SHOWN)
775 LBS (352 KG) REAR PORTED
P-E CONTROL
840 LBS (382 KG) SIDE PORTED
785 LBS (357 KG) REAR PORTED

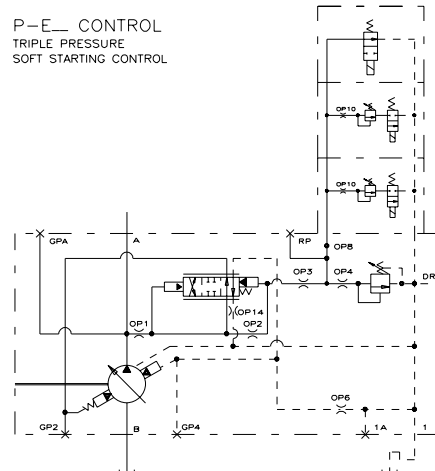
W/ HP LIMITER ADD 25 LBS (11 KG)
W/ LOAD SENSE ADD 10 LBS (4.5 KG)
5. FOR BASIC PUMP DIMENSIONS SEE: DS-47940A
6. LEFTHAND (CW) VERSION IS SHOWN. FOR RIGHTHAND (CCW) VERSION, THE CONTROL CAPS, VOLUME STOPS, AND STROKE INDICATOR WILL BE ON THE OPPOSITE SIDES, ASSUMING THAT THE OUTLET IS ON THE TOP.



P-3 CONTROL
TRIPLE PRESSURE
COMPENSATOR CONTROL



P-E CONTROL
TRIPLE PRESSURE
SOFT STARTING CONTROL



519256-006 sh. 7