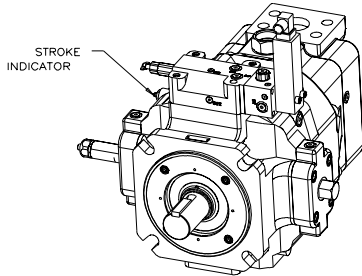


Installation Drawing Electronic Proportional Pres. Comp. Control with/Load Sense and/or HP Limiter

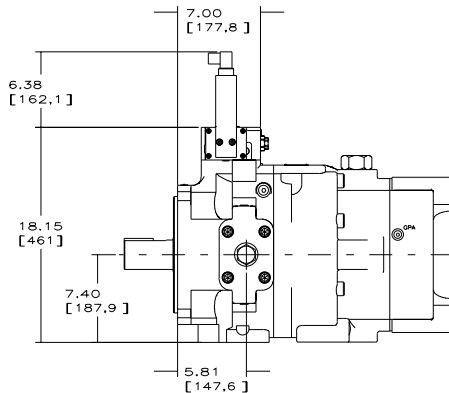
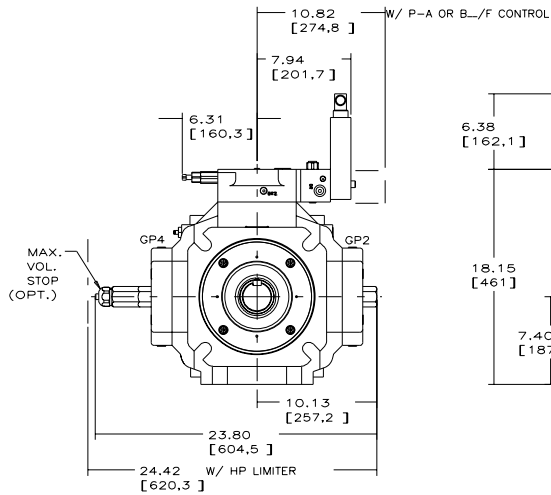
PVV-540-BIU PUMP
WITH P-A OR B- CONTROL



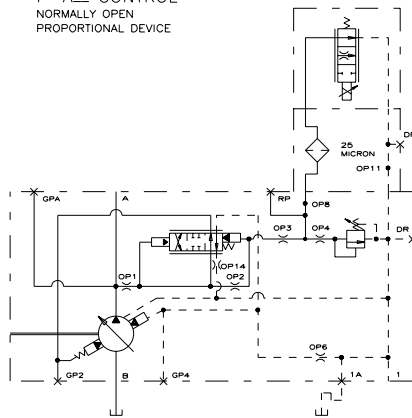
NOTES:

1. PUMPS DESIGNED FOR ONE-WAY SERVICE ARE DIMENSIONED AS SHOWN.
2. THESE UNITS ARE DESIGNED TO RUN CASE FULL OF FLUID AT ALL TIMES. FILL CASE BEFORE STARTING AND CONNECT DRAIN LINES ACCORDINGLY.
3. NUMERICAL DIMENSIONS ARE GIVEN IN INCHES/[MM].
4. NET WEIGHT: P-A OR B- CONTROL
825 LBS (374 KG) SIDE PORTED (SHOWN)
770 LBS (349 KG) REAR PORTED

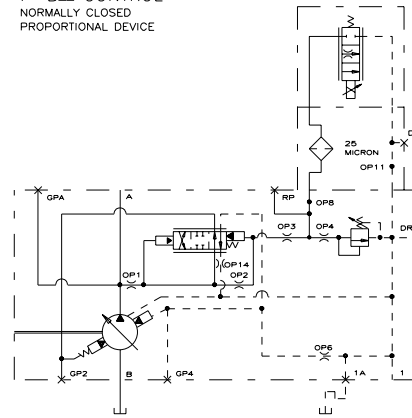
W/ HP LIMITER ADD 25 LBS (11 KG)
W/ LOAD SENSE ADD 10 LBS (4.5 KG)
5. FOR BASIC PUMP DIMENSIONS SEE:
DS-47940A
6. LEFTHAND (CCW) VERSION IS SHOWN. FOR RIGHTHAND (CW) VERSION, THE CONTROL CAPS, VOLUME STOPS, AND STROKE INDICATOR WILL BE ON THE OPPOSITE SIDES, ASSUMING THAT THE OUTLET IS ON THE TOP.



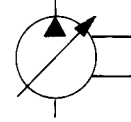
P-A- CONTROL
NORMALLY OPEN
PROPORTIONAL DEVICE



P-B- CONTROL
NORMALLY CLOSED
PROPORTIONAL DEVICE

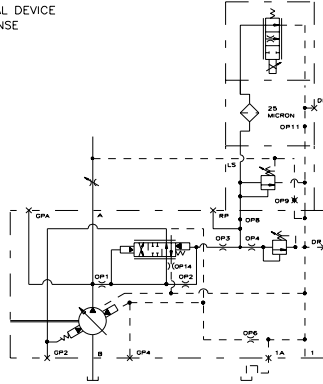


519256-006 sh. 9

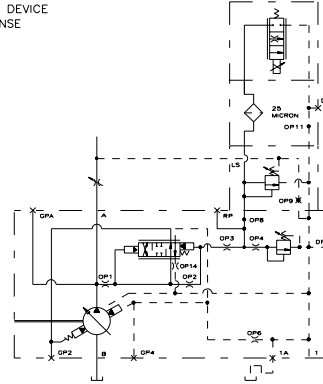


Installation Drawing Electronic Proportional Pres. Comp. Control with/Load Sense and/or HP Limiter

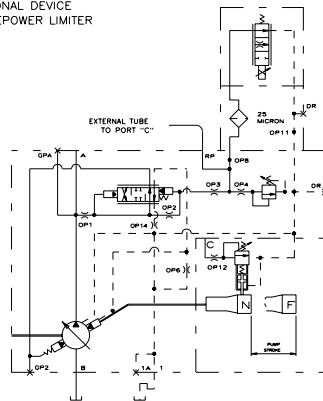
P-A_/F CONTROL
NORMALLY OPEN
PROPORTIONAL DEVICE
W/ LOAD SENSE



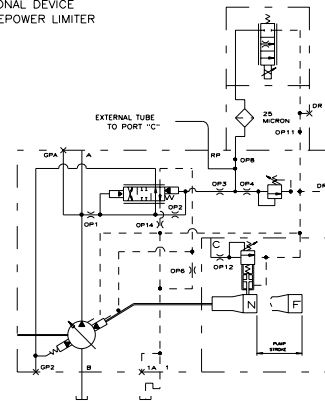
P-B_/F CONTROL
NORMALLY CLOSED
PROPORTIONAL DEVICE
W/ LOAD SENSE



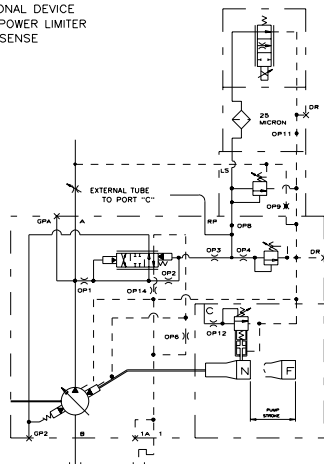
P-A_/H CONTROL
NORMALLY OPEN
PROPORTIONAL DEVICE
W/ HORSEPOWER LIMITER



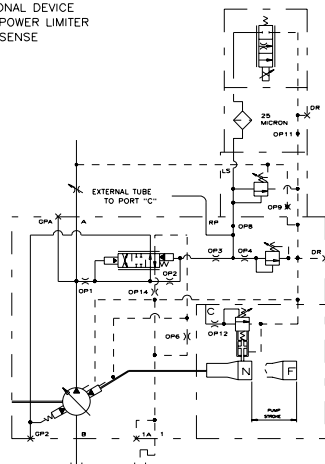
P-B_/H CONTROL
NORMALLY CLOSED
PROPORTIONAL DEVICE
W/ HORSEPOWER LIMITER



P-A_/G CONTROL
NORMALLY OPEN
PROPORTIONAL DEVICE
W/ HORSEPOWER LIMITER
& LOAD SENSE



P-B_/G CONTROL
NORMALLY CLOSED
PROPORTIONAL DEVICE
W/ HORSEPOWER LIMITER
& LOAD SENSE



519256-006 sh. 10