

### PVWC Center Assist Electronic Proportional Control

The following information should be considered when applying Oilgear type "PVWC" "CAEH" Control. These guidelines are to be used to help design systems using a center assist, electronic proportional control. Please consult the Oilgear Technical Sales Department when application and/or system requirement vary (even) slightly from the following.

**Technical Data – Hydraulic:**

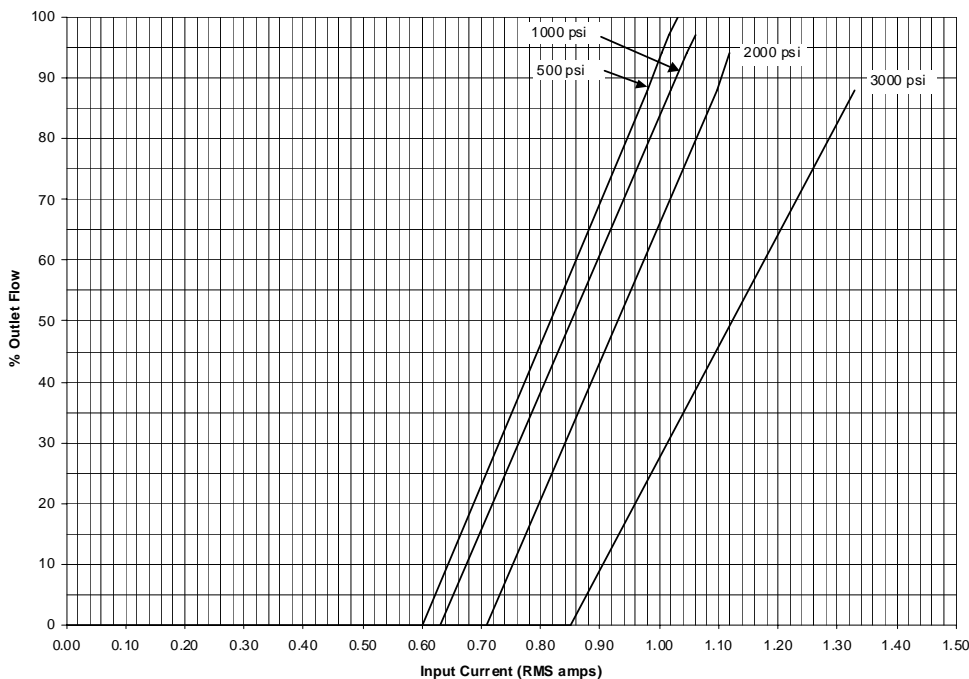
Pilot Supply Pressure:  
 Minimum Requirement = 450 psi (31 bar)  
 Maximum Allowable = 725 psi (50 bar)  
 Pilot Supply Flow – 65 cpm (1.0 lpm) max.  
 Fluid and Ambient Temperature Range  
 -40 to 200 deg. F (-40 to 93 deg. C)  
 O-Ring Seal Material – Viton

**Technical Data – Electrical:**

Coil Resistance = 5.3 +/-0.3 Ohms @ 85 deg. F  
 = 7.4 Ohms @ 200 deg F (see note \*\*)  
 PWM Peak-to-Peak Voltage = 12.0 to 13.7 Volts  
 PWM Frequency = 100 +/-20 Hz  
 Control Valve Modulation Threshold = 0.20 RMS Amps.  
 Maximum Input Current = 1.500 RMS Amps  
 Electrical Connectors are Deutsch DT06, 2 Pin, Male  
 100% Continuous Duty within Specified Voltage Range

\*\* Note: Current feedback control is recommended to offset the effects of coil resistance at high temperatures.

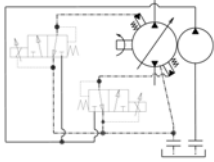
**PVWC Outlet Flow with CAEH Control**



# Technical Bulletin

## PVWC "CAEH"

### CONTROL



**Minimum Required Pilot Supply Pressure  
PVWC CAEH**

