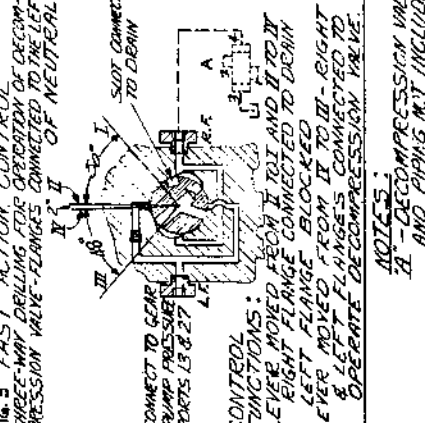
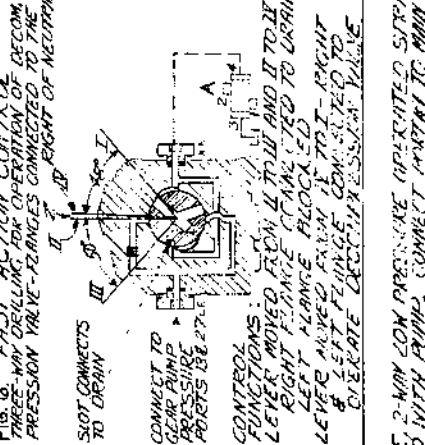
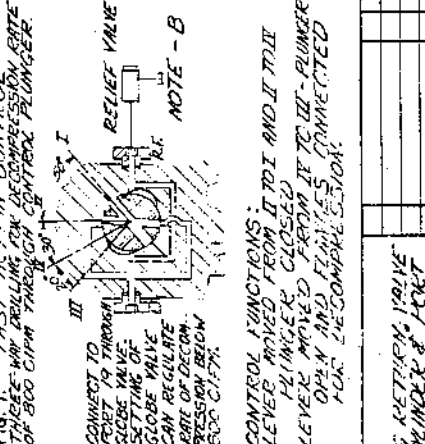
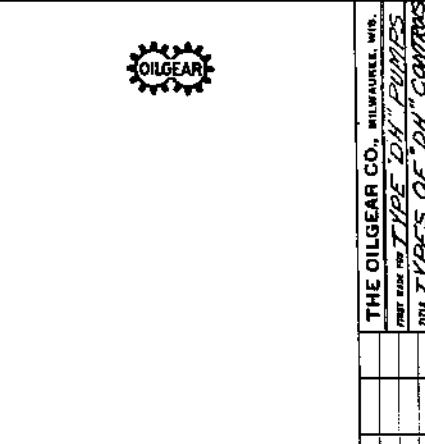
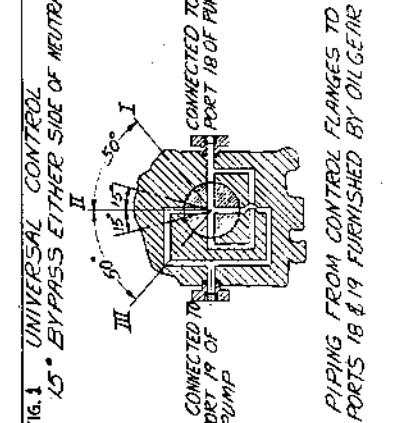
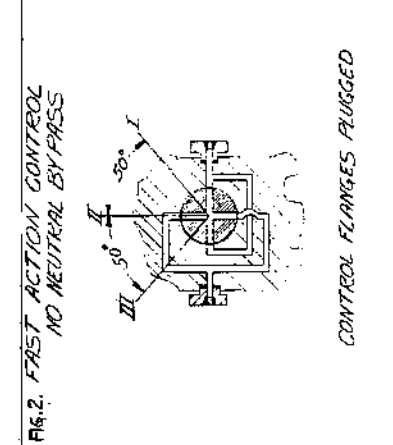
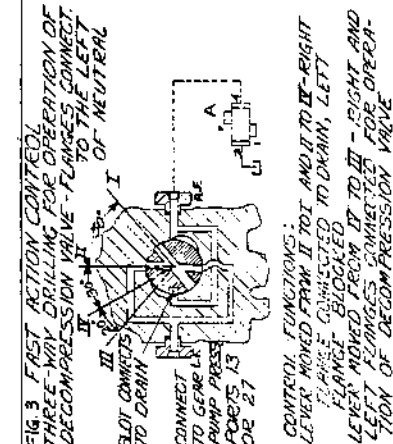
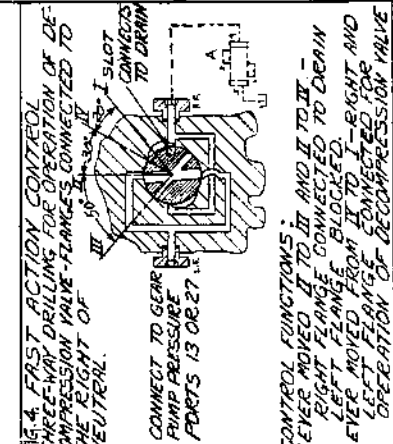
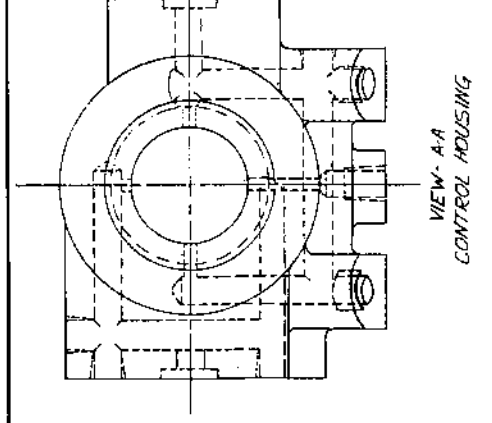
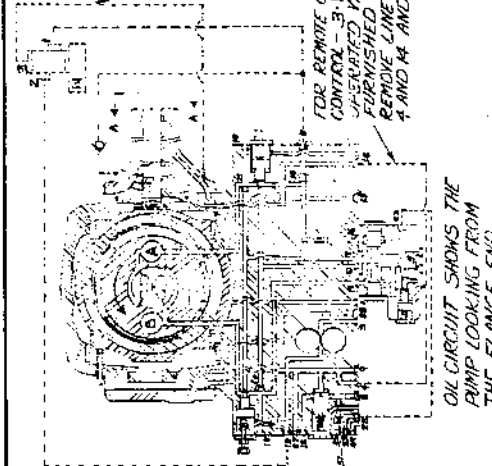
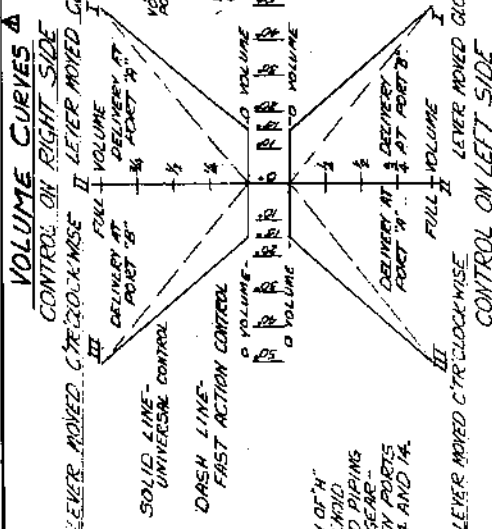


THE OILGEAR CO., MILWAUKEE, WIS.
PART NAME FOR TYPE "DH" PUMPS
TYPE TYPES OF DH CONTROLS
REV. 1
REV. 2
REV. 3
REV. 4
REV. 5
REV. 6
REV. 7
REV. 8
REV. 9
REV. 10
REV. 11
REV. 12
REV. 13
REV. 14
REV. 15
REV. 16
REV. 17
REV. 18
REV. 19
REV. 20
REV. 21
REV. 22
REV. 23
REV. 24
REV. 25
REV. 26
REV. 27
REV. 28
REV. 29
REV. 30
REV. 31
REV. 32
REV. 33
REV. 34
REV. 35
REV. 36
REV. 37
REV. 38
REV. 39
REV. 40
REV. 41
REV. 42
REV. 43
REV. 44
REV. 45
REV. 46
REV. 47
REV. 48
REV. 49
REV. 50
REV. 51
REV. 52
REV. 53
REV. 54
REV. 55
REV. 56
REV. 57
REV. 58
REV. 59
REV. 60
REV. 61
REV. 62
REV. 63
REV. 64
REV. 65
REV. 66
REV. 67
REV. 68
REV. 69
REV. 70
REV. 71
REV. 72
REV. 73
REV. 74
REV. 75
REV. 76
REV. 77
REV. 78
REV. 79
REV. 80
REV. 81
REV. 82
REV. 83
REV. 84
REV. 85
REV. 86
REV. 87
REV. 88
REV. 89
REV. 90
REV. 91
REV. 92
REV. 93
REV. 94
REV. 95
REV. 96
REV. 97
REV. 98
REV. 99
REV. 100

48366
REV. 1
REV. 2
REV. 3
REV. 4
REV. 5
REV. 6
REV. 7
REV. 8
REV. 9
REV. 10
REV. 11
REV. 12
REV. 13
REV. 14
REV. 15
REV. 16
REV. 17
REV. 18
REV. 19
REV. 20
REV. 21
REV. 22
REV. 23
REV. 24
REV. 25
REV. 26
REV. 27
REV. 28
REV. 29
REV. 30
REV. 31
REV. 32
REV. 33
REV. 34
REV. 35
REV. 36
REV. 37
REV. 38
REV. 39
REV. 40
REV. 41
REV. 42
REV. 43
REV. 44
REV. 45
REV. 46
REV. 47
REV. 48
REV. 49
REV. 50
REV. 51
REV. 52
REV. 53
REV. 54
REV. 55
REV. 56
REV. 57
REV. 58
REV. 59
REV. 60
REV. 61
REV. 62
REV. 63
REV. 64
REV. 65
REV. 66
REV. 67
REV. 68
REV. 69
REV. 70
REV. 71
REV. 72
REV. 73
REV. 74
REV. 75
REV. 76
REV. 77
REV. 78
REV. 79
REV. 80
REV. 81
REV. 82
REV. 83
REV. 84
REV. 85
REV. 86
REV. 87
REV. 88
REV. 89
REV. 90
REV. 91
REV. 92
REV. 93
REV. 94
REV. 95
REV. 96
REV. 97
REV. 98
REV. 99
REV. 100

NOTES:
A - DECOMPRESSION VALVE, 2-WAY LOW PRESSURE OPERATED SPRING RETURN VALVE AND PIPING NOT INCLUDED WITH PUMP. CONNECT PARTIAL TO MAIN CHAMBER & PORT # 2 TO TANK BELOW GIL LEVEL.
B - 3/4" RELIEF VALVE, 250 PSI SETTING, SUPPLIED AND WHERED WITH PUMP GENERAL.
THIS DRAWING DOES NOT COVER PUMP OR "DH" PUMPS.
PUMP ROTATION IS CLOCKWISE. ALL FUNCTIONS ON THIS DRAWING, OTHER SPECIAL CONTROL FUNCTIONS CAN BE FURNISHED BY OILGEAR.



NOTES:
 A - DECOMPRESSION VALVE, 2-MIN LOW PRESSURE OPERATED STRIKING RETURN VALVE AND PIPING NOT INCLUDED WITH PUMP. CONNECT PARTIAL TO MAIN CHAMBER & PORT # 2 TO TANK BELOW OIL LEVEL.
 B - 3/4" RELIEF VALVE, 250 PSI SETTING, SUPPLIED AND WIPED WITH PUMP GENERAL DRAWING DOES NOT COVER DETAILS OF "DASH" PUMPS. ALL DIMENSIONS ON THIS DRAWING ARE IN INCHES UNLESS OTHERWISE SPECIFIED. ALL DIMENSIONS CAN BE FURNISHED BY OILGEAR. OTHER SPECIAL CONTROL FUNCTIONS CAN BE FURNISHED BY OILGEAR.

DATE	BY	CHKD BY

NO.	DESCRIPTION OF CHANGES	DATE	BY

THE OILGEAR COMPANY, MILWAUKEE, WIS.
 FIRST MADE FOR TYPE "DA" PUMPS
 THIS TYPE OF "DA" CONTROLS
 DATE 5-2-51
 48366