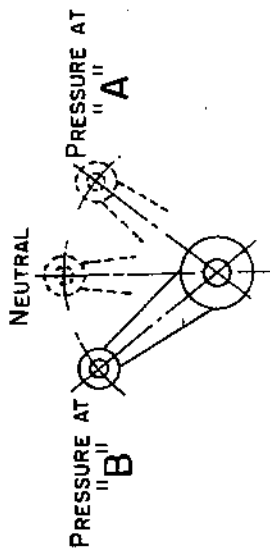
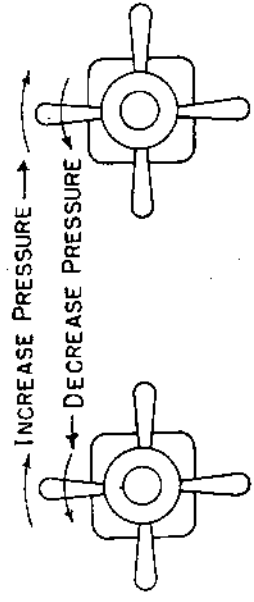


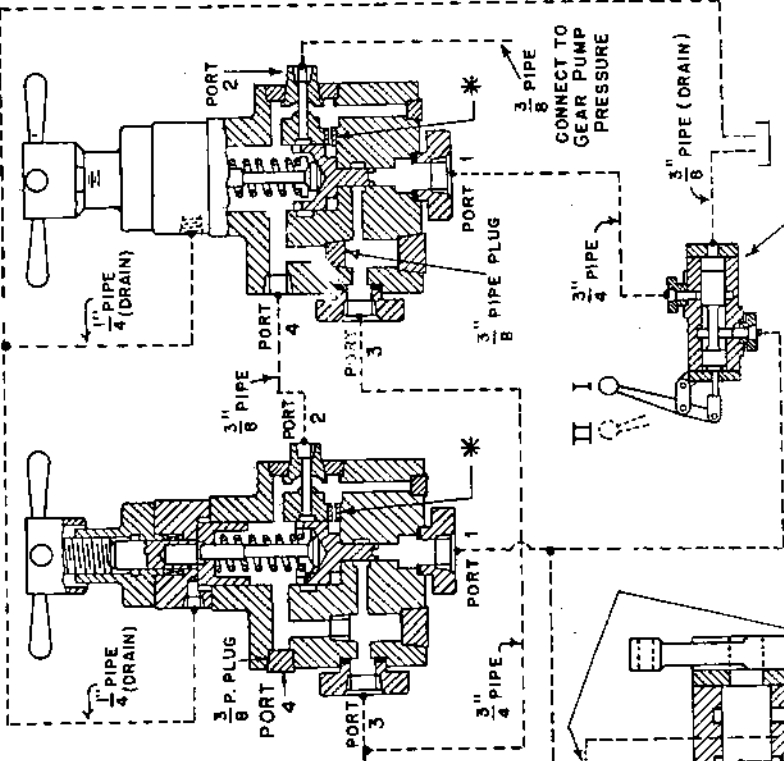
TYPE "DHP" PUMP WITH DUAL REMOTE PRESSURE CONTROL VALVES

47317A



ADJUST THIS REMOTE PRESSURE CONTROL VALVE FOR PRESSURES FROM 350 TO 1000 PSI. (4-60) FROM 450 TO 1000 PSI. (100-180)

ADJUST THIS REMOTE PRESSURE CONTROL VALVE FOR PRESSURES FROM 1000 TO 2500 PSI.



* CHOKE TO PREVENT RELIEF VALVE CHATTER.
POSITION I FOR HIGH PRESSURES.
POSITION II FOR LOW PRESSURES.

ORIFICE (ONLY IF NECESSARY TO RAISE OPERATING PRESSURE FOR PRESSURE SWITCH.)

PRESSURE SWITCH CONNECTION

3/4 HIGH PRESSURE LINE FROM PUMP

AUX. CONTROL RELIEF VALVE

CIRCUIT SHOWS PUMP VIEWED FROM FLANGE END

REFERENCES:

- "DHP" PUMP OIL CIRCUIT DS-947421-A
- REMOTE PRESS. CONTROL VALVE INST. DWG. DS-47502
- REMOTE PRESS. CONTROL VALVE PARTS DWG. DS-947502

PORT 24

1" PIPE CONNECTION TO GEAR PUMP PRESSURE

FULL STROKE STOP

VOLUME ADJUSTING SCREW

PORT 134

NEUTRAL STOP PLUNGER

CONTROL RELIEF VALVE

1/2 PIPE PLUG

47317A	OIL CIRCUIT	
	TYPE "DHP" PUMP WITH DUAL REMOTE PRESSURE CONTROL VALVES.	
DR. G.M.	CH. (S)	
APP. 2.10.		

REISSUED: SEPT. 1961

THE OILGEAR COMPANY
MILWAUKEE 4, WISCONSIN, U.S.A.

DS-947423A