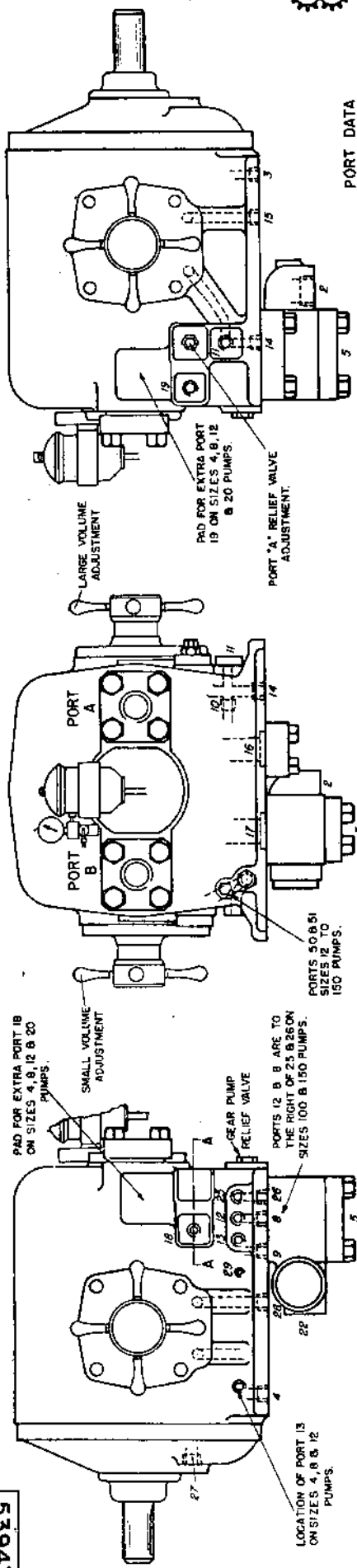


53947A

DR. CES
APP

REISSUED JAN. 8, 1951



PORT DATA

PORT NO.	PUMP SIZE	PORT DESCRIPTION	PIPE TAP SIZE
1	4	HIGH PRESSURE CONN.	1/4
2	8	RETURN CONN.	1/2
3	12	CASE DRAIN	1/2
4	16	EXCESS RETURN EXHAUST	1/2
5	20	GEAR PUMP SUCTION	1/2
6	25	GEAR PUMP PRESSURE	1/2
7	30	PUMP SUCTION	1/2
8	35	A RELIEF VALVE EXHAUST	1/2
9	40	B RELIEF VALVE EXHAUST	1/2
10	45	GEAR PUMP PRESSURE	1/2
11	50	A CORE TO CONTROL CONN.	1/2
12	55	A CORE TO CONTROL CONN.	1/2
13	60	GEAR PUMP REL. VALV. EXH.	1/2
14	65	GEAR PUMP PRESSURE	1/2
15	70	A SIDE CONTROL CONN.	1/2
16	75	A SIDE CONTROL EXHAUST	1/2
17	80	A CORE SIZE	1/2
18	85	B CORE SIZE	1/2
19	90	A CORE CONNECTION	1/2
20	95	A CORE CONNECTION	1/2
21	100	A REL. VALV. CROSS CONN.	1/2
22	105	B REL. VALV. CROSS CONN.	1/2
23	110	STANDARD SUPERCHARGE	1/2
24	115	AUXILIARY CONN.	1/2
25	120	AUXILIARY CONN.	1/2
26	125	GEAR PUMP PRESSURE	1/2
27	130	B SIDE CONTROL EXHAUST	1/2
28	135	OIL FILTER DRAIN	1/2
29	140		
30	145		
31	150		
32	155		
33	160		
34	165		
35	170		
36	175		
37	180		
38	185		
39	190		
40	195		
41	200		
42	205		
43	210		
44	215		
45	220		
46	225		
47	230		
48	235		
49	240		
50	245		
51	250		
52	255		
53	260		
54	265		
55	270		
56	275		
57	280		
58	285		
59	290		
60	295		
61	300		
62	305		
63	310		
64	315		
65	320		
66	325		
67	330		
68	335		
69	340		
70	345		
71	350		
72	355		
73	360		
74	365		
75	370		
76	375		
77	380		
78	385		
79	390		
80	395		
81	400		
82	405		
83	410		
84	415		
85	420		
86	425		
87	430		
88	435		
89	440		
90	445		
91	450		
92	455		
93	460		
94	465		
95	470		
96	475		
97	480		
98	485		
99	490		
100	495		
101	500		
102	505		
103	510		
104	515		
105	520		
106	525		
107	530		
108	535		
109	540		
110	545		
111	550		
112	555		
113	560		
114	565		
115	570		
116	575		
117	580		
118	585		
119	590		
120	595		
121	600		
122	605		
123	610		
124	615		
125	620		
126	625		
127	630		
128	635		
129	640		
130	645		
131	650		
132	655		
133	660		
134	665		
135	670		
136	675		
137	680		
138	685		
139	690		
140	6		