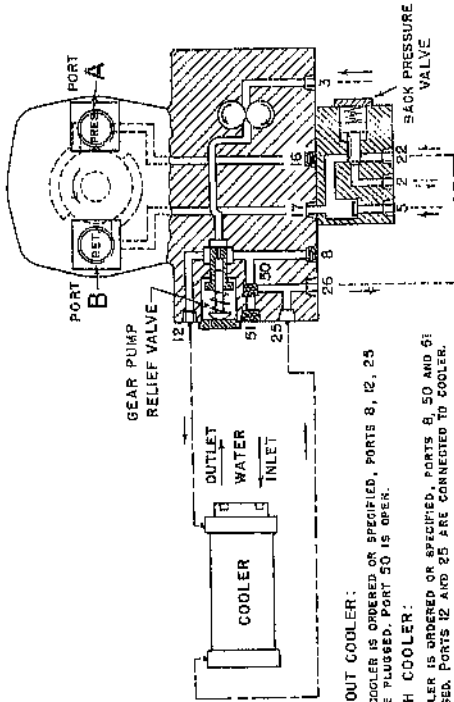


# COOLER OIL CIRCUITS ONE-WAY TYPE "D" PUMPS

57710A

## SIZES 12 to 150 PUMPS WITH DIFFERENTIAL CIRCUITS



### PUMP WITHOUT COOLER:

WHEN NO COOLER IS ORDERED OR SPECIFIED, PORTS 8, 12, 25 AND 51 ARE PLUGGED. PORT 50 IS OPEN.

### PUMP WITH COOLER:

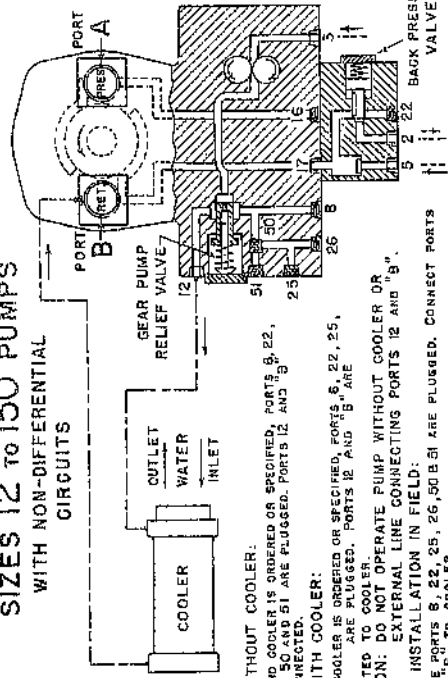
WHEN COOLER IS ORDERED OR SPECIFIED, PORTS 8, 50 AND 51 ARE PLUGGED. PORTS 12 AND 25 ARE CONNECTED TO COOLER.

**CAUTION:** DO NOT OPERATE PUMP WITHOUT COOLER UNLESS PORT 50 IS OPEN AND PORTS 8, 12, 25 AND 51 ARE PLUGGED.

\* COOLER INSTALLATION IN FIELD:

BE SURE PORTS 8, 50 AND 51 ARE PLUGGED. CONNECT PORTS 12 AND 25 TO COOLER. NOTE: PUMPS WITHOUT PORTS 50 AND 51 TO BE PIPED AS PER DIFFERENTIAL CIRCUIT FOR SIZES 4 AND 8 PUMPS.

## SIZES 12 to 150 PUMPS WITH NON-DIFFERENTIAL CIRCUITS



### PUMP WITHOUT COOLER:

WHEN NO COOLER IS ORDERED OR SPECIFIED, PORTS 8, 22, 25, 26, 50 AND 51 ARE PLUGGED. PORTS 12 AND 5 ARE CONNECTED.

### PUMP WITH COOLER:

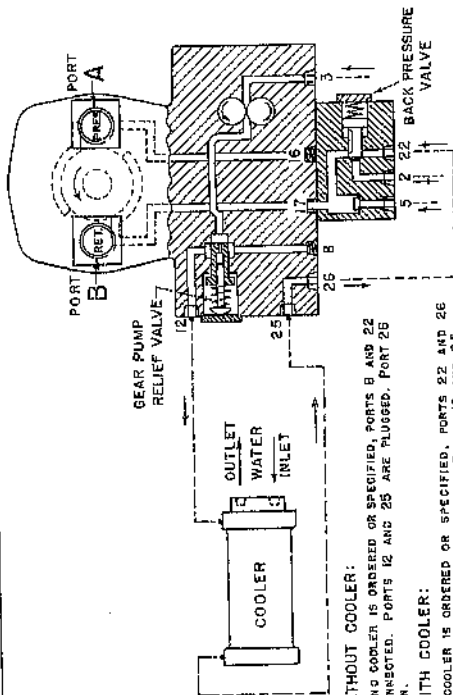
WHEN COOLER IS ORDERED OR SPECIFIED, PORTS 8, 22, 25, 26 ARE PLUGGED. PORTS 12 AND 5 ARE CONNECTED TO COOLER.

**CAUTION:** DO NOT OPERATE PUMP WITHOUT COOLER OR EXTERNAL LINE CONNECTING PORTS 12 AND 5.

\* COOLER INSTALLATION IN FIELD:

BE SURE PORTS 8, 22, 25, 26, 50 AND 51 ARE PLUGGED. CONNECT PORTS 12 AND 5 TO COOLER. NOTE: PUMPS WITHOUT PORTS 50 AND 51 TO BE PIPED AS PER NON-DIFFERENTIAL CIRCUIT FOR SIZES 4 AND 8 PUMPS.

## SIZES 4 AND 8 PUMPS WITH DIFFERENTIAL CIRCUITS



### PUMP WITHOUT COOLER:

WHEN NO COOLER IS ORDERED OR SPECIFIED, PORTS 8 AND 22 ARE CONNECTED. PORTS 12 AND 25 ARE PLUGGED. PORT 26 IS OPEN.

### PUMP WITH COOLER:

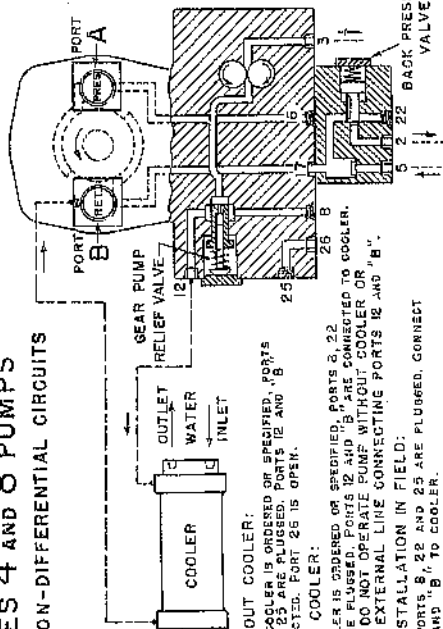
WHEN COOLER IS ORDERED OR SPECIFIED, PORTS 22 AND 26 ARE CONNECTED. PORT 8 IS PLUGGED. PORTS 12 AND 25 ARE CONNECTED TO COOLER.

**CAUTION:** DO NOT OPERATE PUMP WITHOUT COOLER OR EXTERNAL LINE CONNECTING PORTS 12 AND 25.

\* COOLER INSTALLATION IN FIELD:

BE SURE TUBE CONNECTING PORTS 8 AND 22 IS REMOVED. PLUG PORT 8. CONNECT PORTS 22 AND 26. CONNECT PORTS 12 AND 25 TO COOLER.

## SIZES 4 AND 8 PUMPS WITH NON-DIFFERENTIAL CIRCUITS



### PUMP WITHOUT COOLER:

WHEN NO COOLER IS ORDERED OR SPECIFIED, PORTS 8, 22 AND 25 ARE PLUGGED. PORTS 12 AND 5 ARE CONNECTED. PORT 26 IS OPEN.

### PUMP WITH COOLER:

WHEN COOLER IS ORDERED OR SPECIFIED, PORTS 22 AND 26 ARE PLUGGED. PORTS 12 AND 5 ARE CONNECTED TO COOLER.

**CAUTION:** DO NOT OPERATE PUMP WITHOUT COOLER OR EXTERNAL LINE CONNECTING PORTS 12 AND 5.

\* COOLER INSTALLATION IN FIELD:

BE SURE PORTS 8, 22 AND 25 ARE PLUGGED. CONNECT PORTS 12 AND 5 TO COOLER.

### NOTE:

OIL CIRCUIT SHOWN AS VIEWED FROM FLANGE END. CORED OR DRILLED PASSAGES ARE SHOWN THUS: OPEN PORTS ARE SHOWN THUS: PLUGGED PORTS ARE SHOWN THUS:

SEE OIL CIRCUIT OF SPECIFIC PUMP FOR MORE DETAILED INFORMATION.

COOLER INSTALLATION DRAWING DS-47905

\* OILGEAR RECOMMENDS GALVANIZED FITTINGS AND PIPE BE USED TO CARRY WATER TO AND FROM COOLERS.

VO1725

COOLER OIL CIRCUITS  
ONE-WAY TYPE "D" PUMPS

REISSUED: FEB. 1962

**THE OILGEAR COMPANY**  
MILWAUKEE 4, WISCONSIN, U.S.A.

DS-947905A