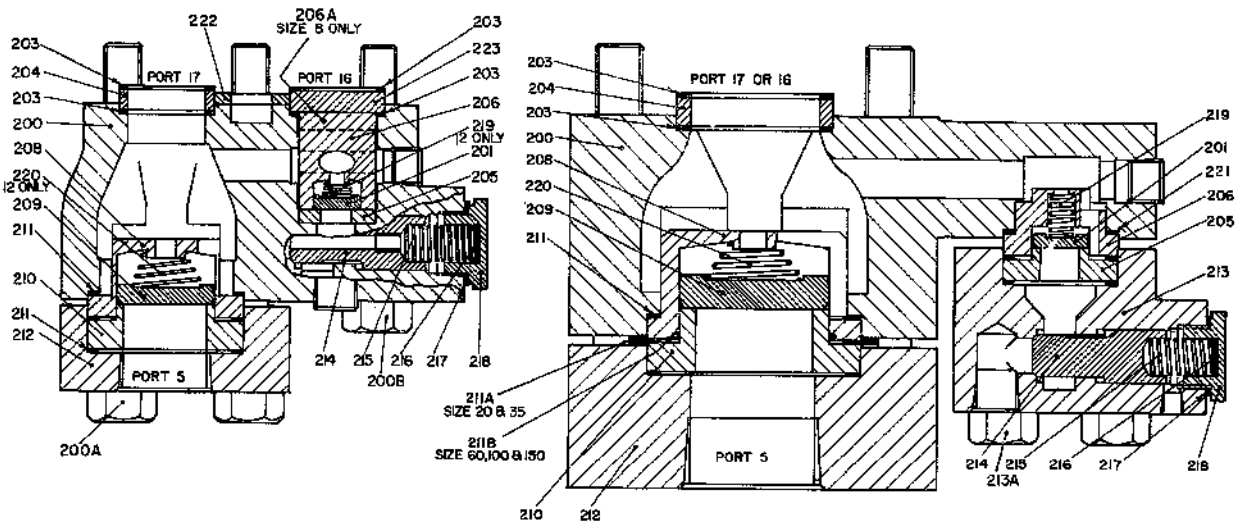
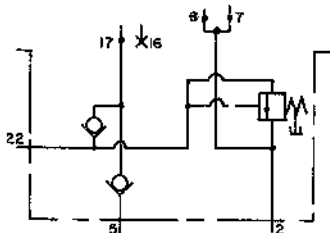


OILGEAR SUCTION VALVE

SUCTION CHECK & SUPERCHARGE CHECK TYPE

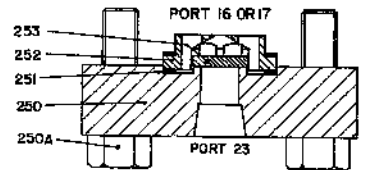
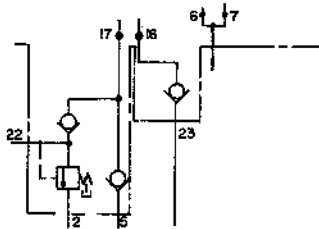


SIZE 8 & 12



WHEN THIS SUCTION VALVE IS USED, A CHECK VALVE FOR FREE FLOW FROM RESERVOIR TO PORT "A" IS NORMALLY USED.

SIZE 20 THRU 150



PARTS LIST

Part No.	Description	Part No.	Description
200.	Body, Suction Valve	213A.	Bolt, Hex. Hd.
200A.	Screw, Sock. Hd. Cap.	214.	Plunger, B. P. R. V.
200B.	Bolt, Hex. Hd.	215.	Spring, B. P. R. V.
201.	Disc, Small Check	216.	Shims, B. P. R. V.
203.	Gasket, Spacer	217.	Gasket, B. P. R. V.
204.	Spacer, Hollow	218.	Cap, B. P. R. V.
205.	Seat, Small Check	219.	Spring, Small Disc.
206.	Cage, Small Check	220.	Spring, Large Disc.
206A.	Spacer, Check Cage	221.	Gasket, BPRV Flange
208.	Cage, Large Check	222.	Gasket
209.	Disc, Large, Check	223.	Spacer, Blank
210.	Seat, Large Check		
211.	Gasket, Cage	250.	Flange, Check Valve
211A.	Gasket, Cage	250A.	Bolt, Hex. Hd.
211B.	Seal, O'ring	251.	Gasket, Cage
	1/8 Cross Section, 3 - 1/2 O. D, 90 Duro	252.	Cage, Check
212.	Flange, Port 5	253.	Disc, Check
213.	Body, B. P. Rel. Valve		

NOTE When ordering replacement parts, be sure to include unit serial number, data sheet (DS) number and part number. Specify type of hydraulic fluid used when ordering O'rings, seals, or packings.

PART SUPERCHARGE CHK., SUCTION CHK. FROM:
 DE. O.P.
 CH. SP.
 TR. APR. 1967
 506405

ISSUED MAY 1967

THE OILGEAR COMPANY
MILWAUKEE 4, WISCONSIN, U.S.A.

DS-947909