

DROP-IN-PLACE PVV CONVERSION FOR D-PUMP

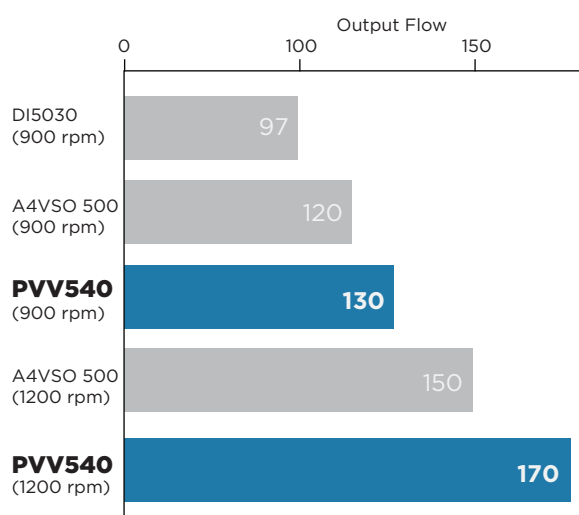
*Greatly Increase Productivity
Reduce Energy Consumption*



MAIN ADVANTAGE

- TRUE Direct Drop-In Replacement – Shaft location, main pressure port locations, main and auxiliary pilot flows, filtration functions, and “1-Way” or “2-Way” functionality all maintained on the pump skid.
- Modular construction for ease of service and future upgrade of piping to modern standards.
- Cost effective and fast to repair. Can be field rebuilt in just a few hours. Quick factory repair turn-around.
- Industry-leading Oilgear axial piston pump technology with no B-10 life issues nor bearing flush required.
- For use with ISO VG32 to VG150 fluids
- Operation at 900 rpm on original legacy motor or 1200 rpm for greatly reduced cycle time.
- VFD compatible.
- Worldwide availability of application engineering, field service, spare parts, and factory repair services.

PERFORMANCE COMPARISON



Note: System evaluation is required to confirm key application details such as fluid cleanliness, viscosity, reservoir mounting details, suction conditions, control system integration, etc.

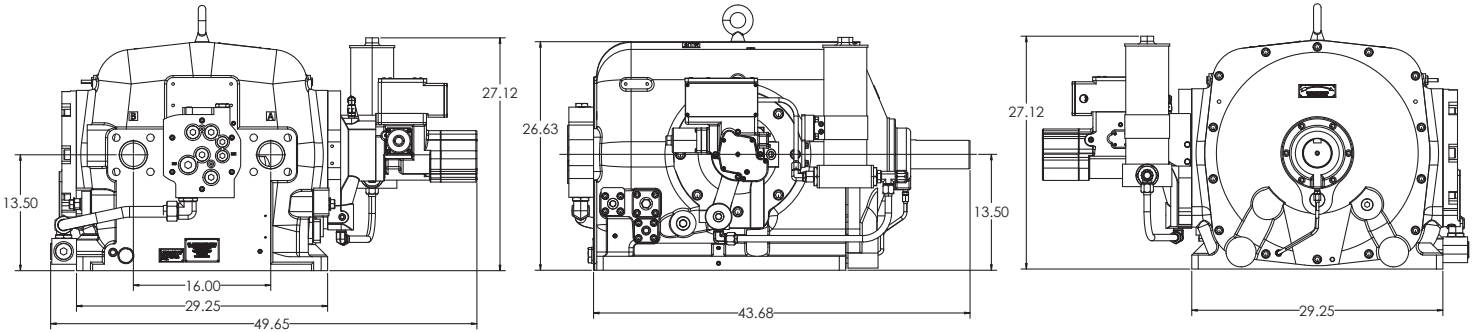
FLUID CLEANLINESS

D-Pump	21/19/16
PVV Pump Skid	20/18/15

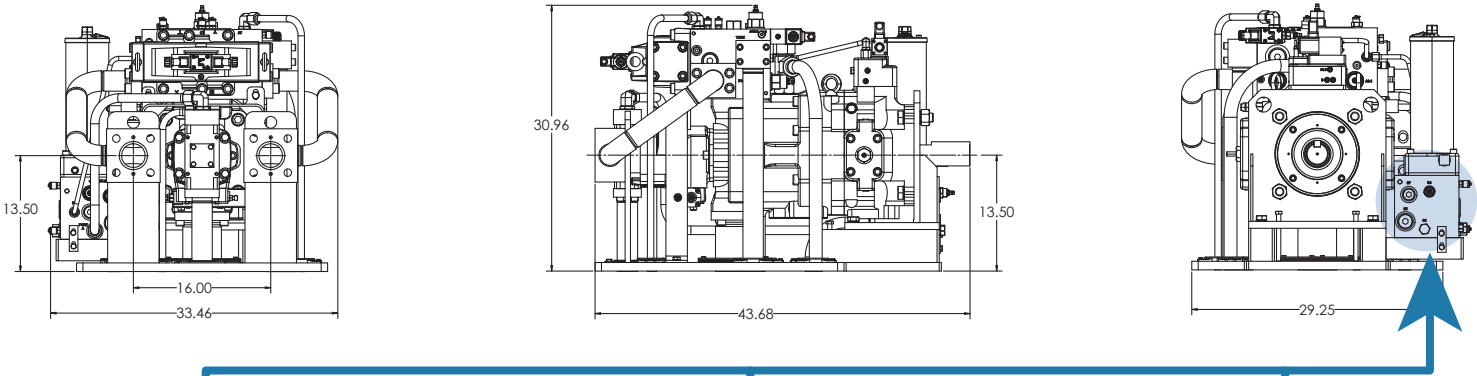
RECOMMENDED VISCOSITY FOR INDUSTRIAL APPLICATIONS

D-Pump Size 35-60	ISO 68
D-Pump Size 100+	ISO 100
PVV Pump Skid	ISO 46 to 100

Other ISO viscosities may be used, consult Oilgear for consideration / acceptance



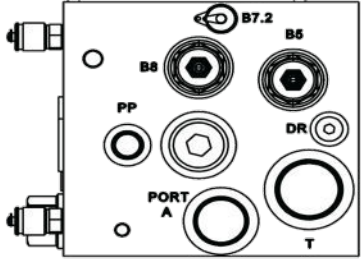
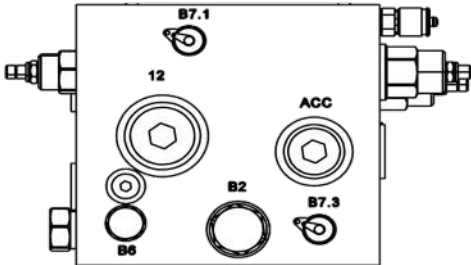
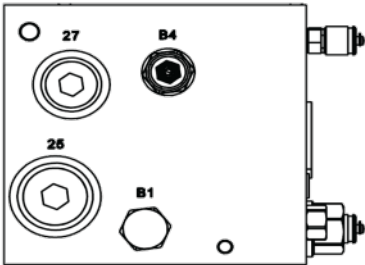
PVV Upgrade Skid



**Front View
(Shaft Side)**

Side View

Rear View



PVV Retrofit Skid Pilot Manifold Valves & Port Sizing & Description

Number	Description	Sizing	Notes
12	Legacy filter/cooler supply	-20 SAE	D pump legacy, provided plugged
25	Legacy filter/cooler return	-20 SAE	D pump legacy, provided plugged
27	Legacy Pilot Supply	-16 SAE	D pump legacy, provided plugged
ACC	Accumulator port	-16 SAE	Provided plugged, for optional accumulator
PP	Pilot Port	-8 SAE O-ring Boss	Preplumbed from factory
DR	Drain port	-6 SAE O-ring Boss	Preplumbed from factory
A	Inlet from pilot pump	-16 SAE O-ring Boss	Preplumbed from factory
T	Tank port	-20 SAE O-ring Boss	Preplumbed from factory

SKID PERFORMANCE CHART

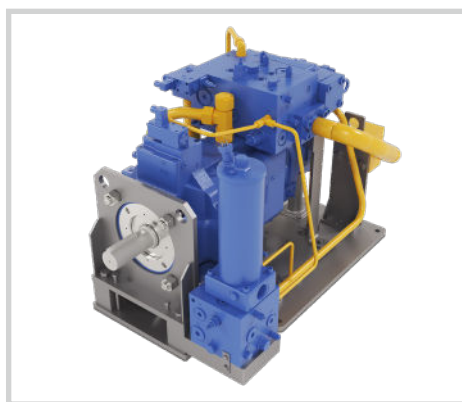
ORIGINAL PUMP					REPLACEMENT SKID			
Model				Rated Pressure PSI	Main Pump	Main Pump Flow Max GPM @900/1200/MAX RPM ³	Pilot Flow Max GPM @ 900/1200 RPM ¹	Rated Pressure PSI
D-3525	900	25.1	8.5	2500	PVG-130	29/39/73	10/14 ²	3750 ⁴
D-3517		38.4		1700	PVG-180	41/55/85		
D-6025		46.2	11.6	2500	PVV-250	54/72/110		
D-6050		26.4		5000	PVG-150	33/45/73		
D-3511		58.9	8.5	1100	PVV-540	123/165/206		
D-6011		104	11.6	1100				
D-6017		71.6		1700				
D-10011		172	22.3	1100			22/30 ²	
D-10017		109		1700				
D-10025		69.4		2500				
D-15025		102	29.5	2500			30/40 ²	
D-15030		96.8		3000				
D-15035		74.9		3500				
D-22035		93.2		3500				
D-23030	1200	171	39.3	3000				
D-20035		128		3500				
DN-35030		171		3000				
DN-35035		162		3500				

¹ Flow & pressure adjustable independent pilot flow pump, original D pump is fixed pilot flow integral to main pump

² Other pilot flow rates available

³ Pumps can run on higher RPM motors or on a variable frequency drive for much higher flow/production rates after Oilgear engineering review

⁴ 5000 PSI option available



OILGEAR FIELD SERVICE

Bringing Customers from Reactive to Proactive



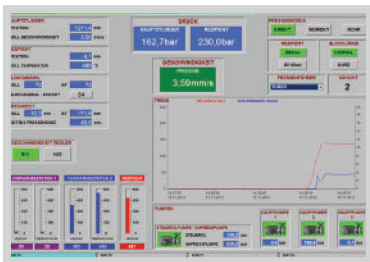
Press Audit

- Health Check of electrohydraulic system
- Diagnostic readings of pressures & flows of system
- Analyze hydraulic components condition
- Fluid sample taken and condition analyzed
- Detailed report with findings & suggested actions



Preventative Maintenance Program

- Analyze and repair leaks
- Analyze power system condition
- Review hydraulic system maintenance with facility personnel
- Review best practices with maintenance personnel
- Multi year agreement



Press Tune

- Return press to as efficient OEM operation as system will allow
- Check pumps, valve, and actuators & adjust as needed
- Check HMI for alerts / codes and address as needed
- Resolve system shocks / pressure spikes via adjustments
- Review hydraulic system maintenance with facility personnel
- Optimize press cycle for production and machine life



Hydraulics Training

- On-site convenience
- Classroom & Hands on training
- Trouble shooting guidance
- Real world training utilizing your schematics & press
- Basic and advanced training available

The Oilgear Company

Global Headquarters

📞 231-929-1660

✉ ussales@oilgear.com

📍 1424 International Drive, Traverse City, MI 49686

🌐 www.oilgear.com

©2024 THE OILGEAR COMPANY. ALL RIGHTS RESERVED.

Oilgear Fremont, Nebraska

905 South Downing St. Fremont, NE 68025 USA

Oilgear Mexicana S.A.

Calle Argentina 3913, Monterrey, 64930, Mexico

Oilgear do Brasil

Av. Ricardo Bassoli Cezare 1009, 13050-080 Campinas, Brazil

Oilgear Towler UK

37 Burley Road, Leeds, LS3 1JT, United Kingdom

Oilgear Towler S.A.S.

5, Allée des Frères Montgolfier, 77183 Croissy-Beaubourg, France

Oilgear Towler GmbH

Im Gotthelf 8, 65795 Hattersheim, Germany

Oilgear Towler S.A.U.

Entidad Zikuñaga, 62, 20120, Hernani, Spain

Oilgear South Korea

167-3 Techno 2-ro, Yuseong-gu, Daejeon City, 34025, South Korea

Oilgear China Co., Ltd.

3rd Floor, Bldg. A, No.3500 Xiupu Road, Shanghai, China

Scan the QR code
for more information:

