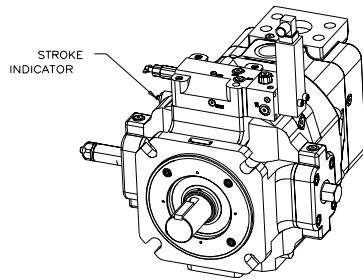


Installation Drawing Electronic Proportional Pres. Comp. Control with/Load Sense and/or HP Limiter

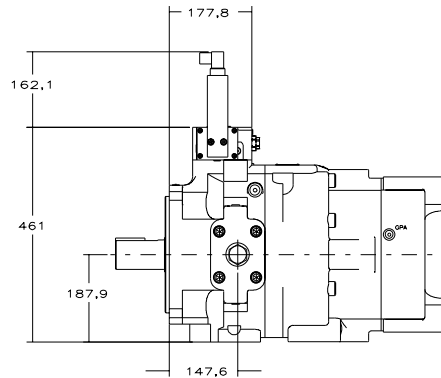
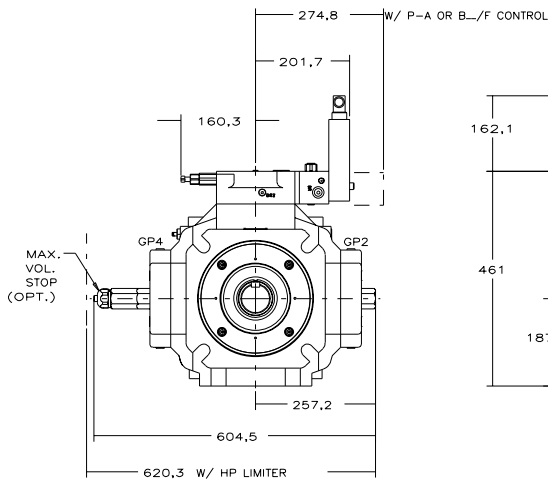
PVV-540-B1B PUMP
WITH P-A OR B- CONTROL



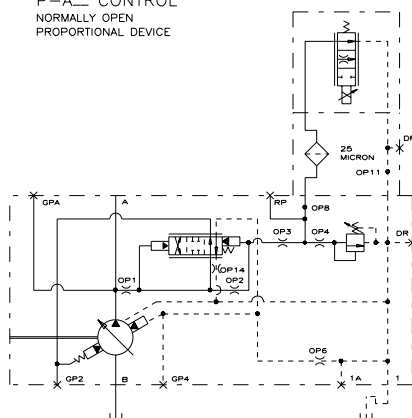
NOTES:

1. PUMPS DESIGNED FOR ONE-WAY SERVICE ARE DIMENSIONED AS SHOWN.
2. THESE UNITS ARE DESIGNED TO RUN CASE FULL OF FLUID AT ALL TIMES. FILL CASE BEFORE STARTING AND CONNECT DRAIN LINES ACCORDINGLY.
3. NUMERICAL DIMENSIONS ARE GIVEN IN MILLIMETERS.
4. NET WEIGHT: P-A OR B- CONTROL
374 KG SIDE PORTED (SHOWN)
349 KG REAR PORTED

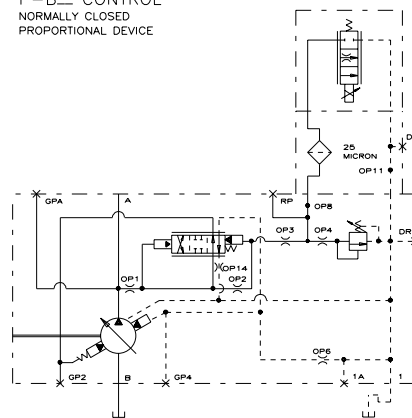
W/ HP LIMITER ADD 11 KG
W/ LOAD SENSE ADD 4.5 KG
5. FOR BASIC PUMP DIMENSIONS SEE: DS-M47940A
6. LEFTHAND (CCW) VERSION IS SHOWN. FOR RIGHTHAND (CW) VERSION, THE CONTROL CAPS, VOLUME STOPS, AND STROKE INDICATOR WILL BE ON THE OPPOSITE SIDES, ASSUMING THAT THE OUTLET IS ON THE TOP.



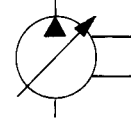
P-A- CONTROL
NORMALLY OPEN
PROPORTIONAL DEVICE



P-B- CONTROL
NORMALLY CLOSED
PROPORTIONAL DEVICE

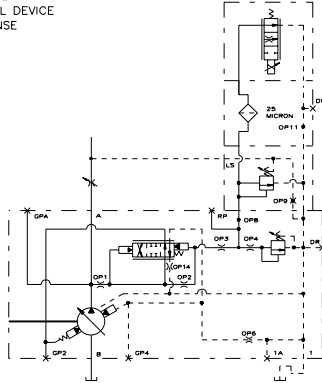


519256-306 sh. 9

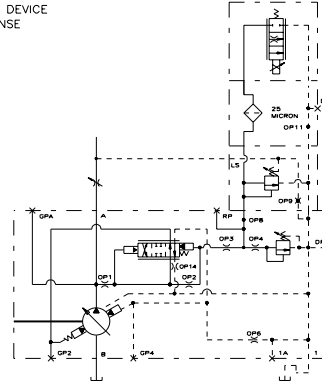


Installation Drawing Electronic Proportional Pres. Comp. Control with/Load Sense and/or HP Limiter

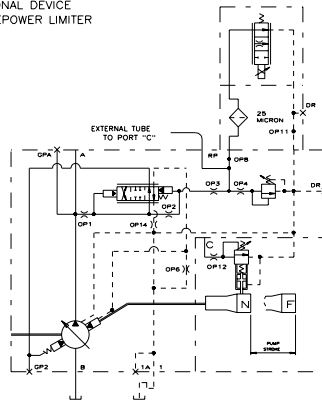
P-A_/F CONTROL
NORMALLY OPEN
PROPORTIONAL DEVICE
W/ LOAD SENSE



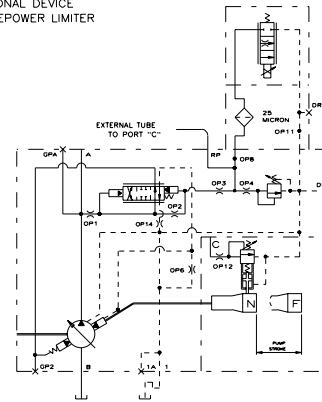
P-B_/F CONTROL
NORMALLY CLOSED
PROPORTIONAL DEVICE
W/ LOAD SENSE



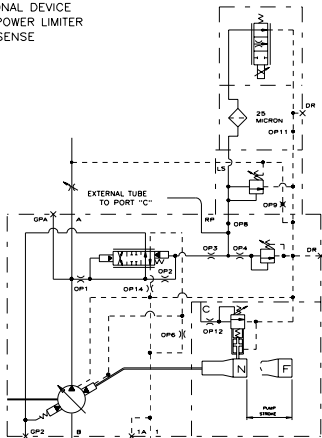
P-A_/H CONTROL
NORMALLY OPEN
PROPORTIONAL DEVICE
W/ HORSEPOWER LIMITER



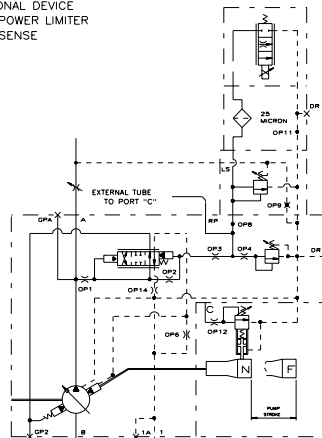
P-B_/H CONTROL
NORMALLY CLOSED
PROPORTIONAL DEVICE
W/ HORSEPOWER LIMITER



P-A_/G CONTROL
NORMALLY OPEN
PROPORTIONAL DEVICE
W/ HORSEPOWER LIMITER
& LOAD SENSE



P-B_/G CONTROL
NORMALLY CLOSED
PROPORTIONAL DEVICE
W/ HORSEPOWER LIMITER
& LOAD SENSE



519256-306 sh. 10