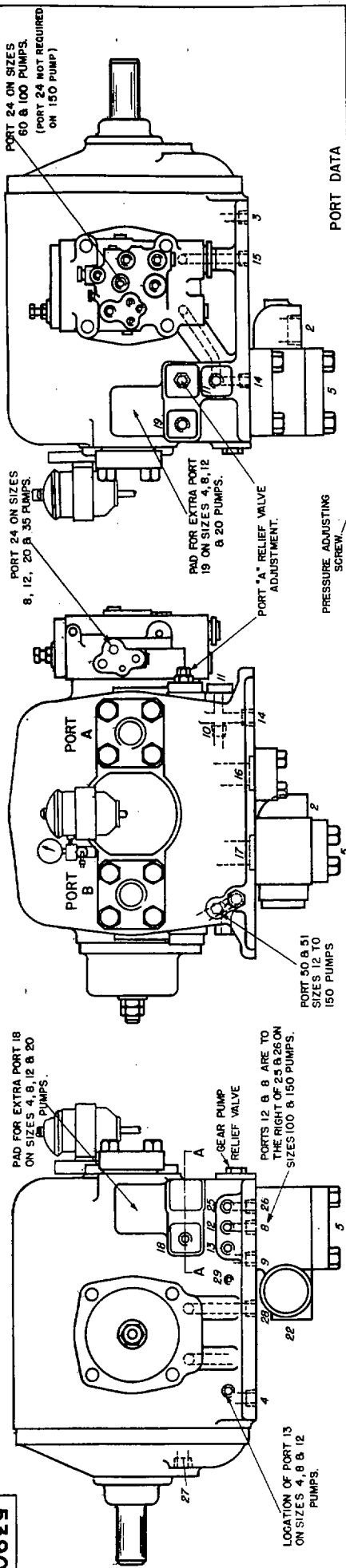


539000

DR. CES REISSUED SEPT. 15, 1955
APP. E. D.

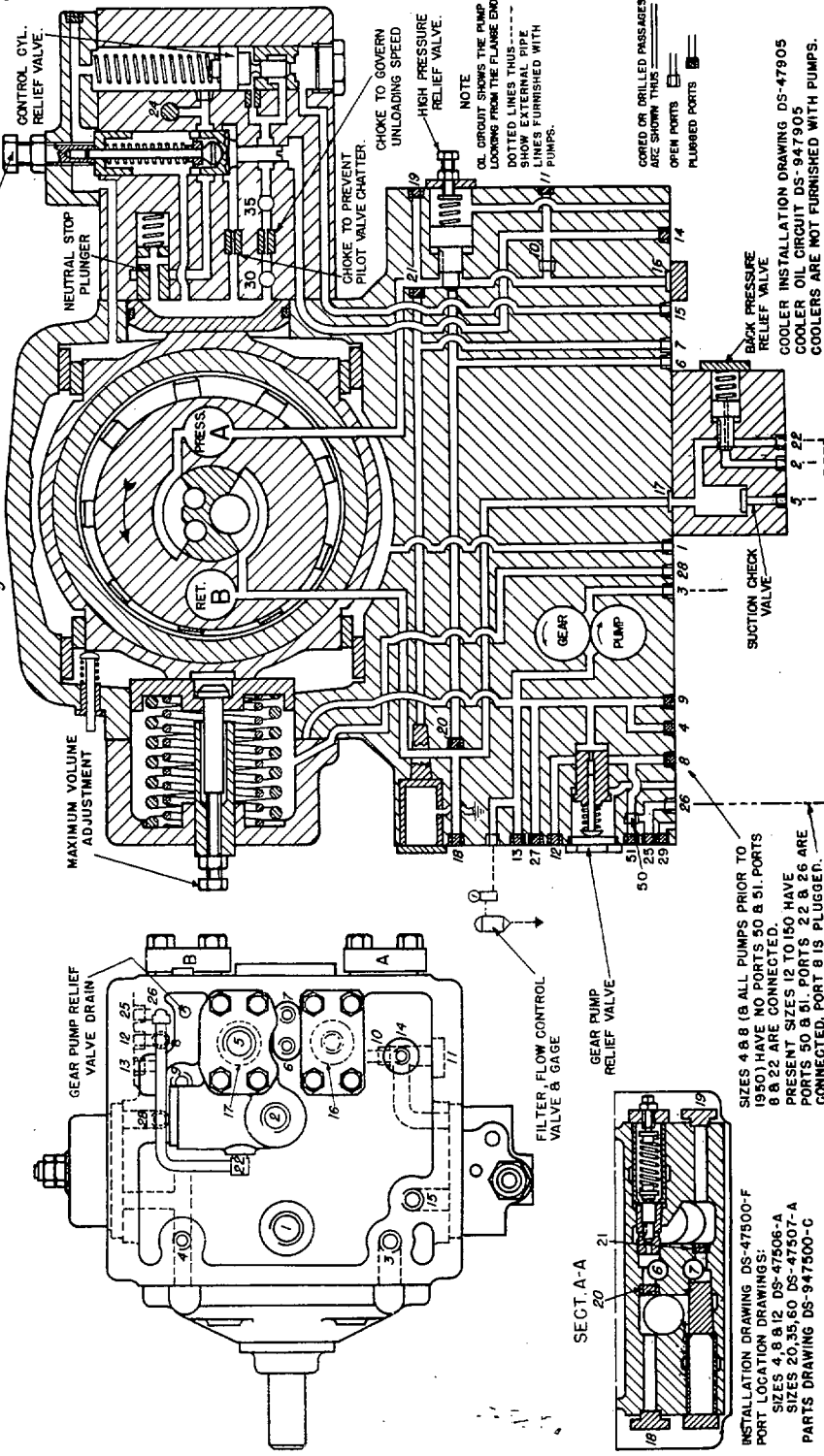
MILWAUKEE 4, THE OILGEAR CO. WISCONSIN, U.S.A.

DS-947520-D



PORT DATA

PORT NO.	PUMP SIZE	PORT DESCRIPTION	PIPE TAP SIZE
A	High Pressure Conn.	3/4	1 1/4
B	Return Conn.	3/4	1 1/4
1	Case Drain	3/4	1 1/4
2	Excess Return Exhaust	3/8	1/2
3	Gear Pump Suction	3/8	1/2
4	Gear Pump Pressure	1/2	3/8
5	Pump Suction	3/4	1 1/4
6	'A' Relief Valve Exhaust	3/8	1/2
7	'B' Relief Valve Exhaust	3/8	1/2
8	Gear Pump Rel. Vlv. Exh.	1/2	3/8
9	Gear Pump Pressure	1/2	3/8
10	'A' Gore to Control Conn.	1/4	1/4
11	'A' Side Control Conn.	3/8	3/8
12	Gear Pump Pressure	1/2	3/8
13	Gear Pump Pressure	1/2	3/8
14	'A' Side Control Conn.	1/4	1/4
15	'A' Side Control Exhaust	3/8	3/8
16	'A' Gore Size	7/8	1 1/8
17	'B' Gore Size	7/8	1 1/8
18	'B' Gore Connection	3/8	3/8
19	'A' Gore Connection	3/8	3/8
20	'A' Rel. Vlv. Gross Conn.	1/4	1/4
21	'B' Rel. Vlv. Gross Conn.	1/4	1/4
22	Standard Supercharge	3/8	3/8
24	External Gear Pump Conn.	1/4	1/4
25	Auxiliary Conn.	1/2	1/2
26	Auxiliary Conn.	3/8	3/8
27	Gear Pump Pressure	1/2	3/8
28	'B' Side Control Exhaust	3/8	3/8
29	Oil Filter Drain	1/4	1/4
30	Gage Connection	1/4	1/4
35	Pressure Sw. Conn.	1/2	1/2
50	G.P.R.V. Exhaust	1/2	1/2
51	Access. Port to Port 50	1/2	1/2



OILGEAR TYPE "DP" PUMP

539000-D

* BLANK FLANGE UNLESS OTHERWISE SPECIFIED.

SIZES 4 & 8 (ALL PUMPS PRIOR TO 1950) HAVE NO PORTS 50 & 51. PORTS 8 & 22 ARE CONNECTED. PRESENT SIZES 12 TO 150 HAVE PORTS 50 & 51. PORTS 21 & 26 ARE CONNECTED. PORT 8 IS PLUGGED.

INSTALLATION DRAWING DS-47500-F
PORT LOCATION DRAWINGS:
SIZES 4, 8 & 12 DS-47506-A
SIZES 20, 35, 50 DS-47507-A
PARTS DRAWING DS-947500-C

COOLER INSTALLATION DRAWING DS-47905
COOLER OIL CIRCUIT DS-947905
COOLERS ARE NOT FURNISHED WITH PUMPS.