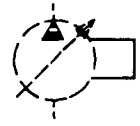
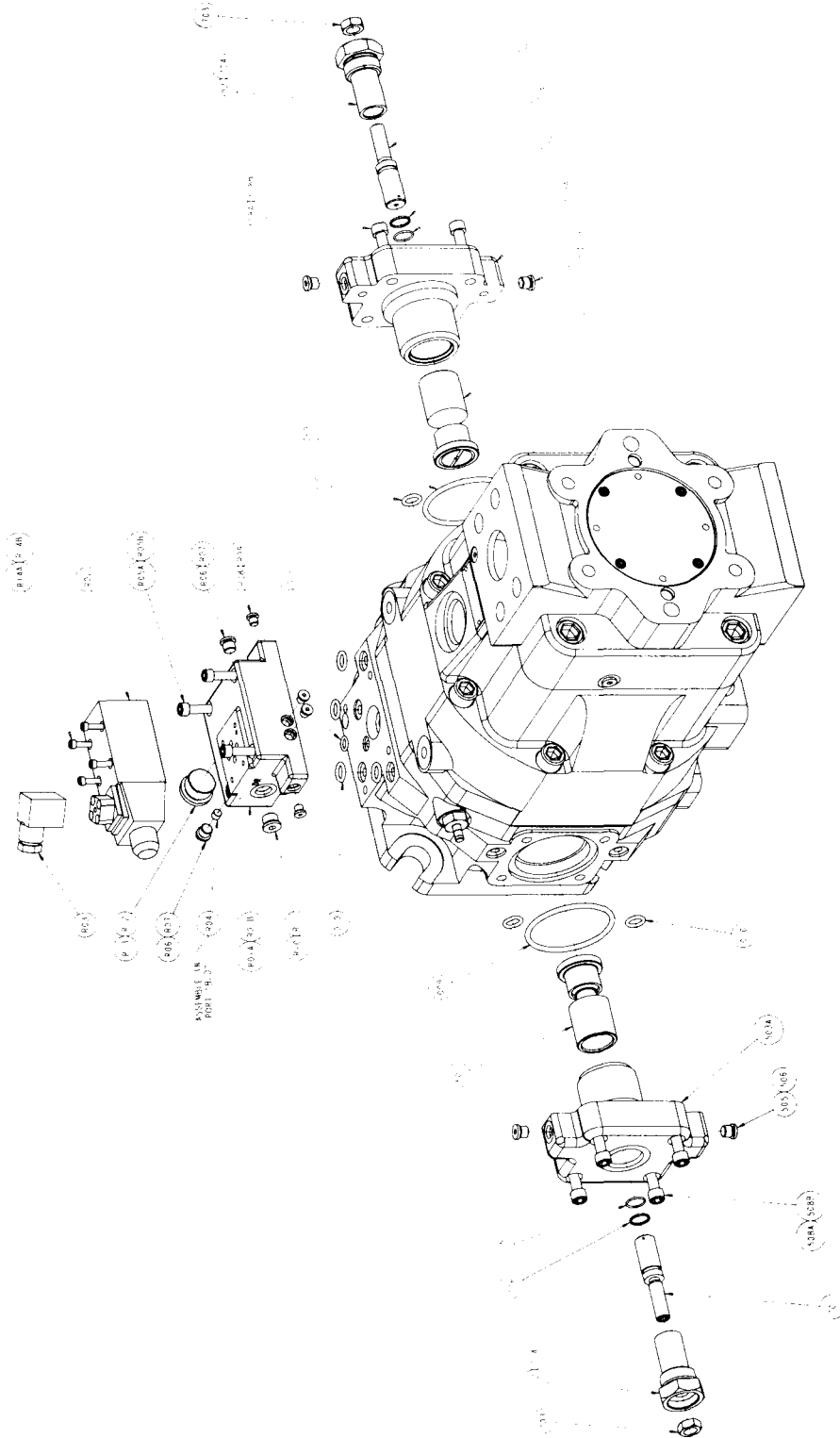


"R" CONTROL



Parts Drawing

Two Position Solenoid Selector Control



518718 sht. 1 of 2

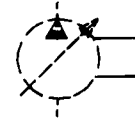


**PUMP, VARIABLE DELIVERY
PVV-200 & 250**

MAINTENANCE

2

"R" CONTROL



Parts List

Two Position Solenoid Selector Control

Parts used in this assembly are per Oilgear specifications. Use Oilgear parts to ensure compatibility with assembly requirements. When ordering replacement parts, be sure to include pump type designation, serial number, Data Sheet (DS-) number and item number. To assure seal and packing compatibility, specify type of hydraulic fluid used.

ITEM NO.	DESCRIPTION
700	VOLUME STOP ASSEMBLY
701	Stop, Min./Max. Volume
702	Gland, Volume Stop
703	Nut, Lock
704	Seal, O'ring
705	Seal, O'ring
706	Ring, Back-up

O'RING and BACK-UP RING SIZE
Cross Section x O.D. Duro ±5

ITEM NO.	SIZE
009	3/16 x 3-3/8
010	1/8 x 3/4
011	3/32 X 9/16
506	904 ARP
704	916 ARP
705	1/16 x 3/4
706	016
R07	904 ARP
R09	902 ARP
R11	906 ARP
R13	912 ARP

ITEM NO.	DESCRIPTION
009	COMMON ASSEMBLY GROUP
010	Seal, O'ring
011	Seal, O'ring
501	CONTROL HEAD ASSEMBLY
503A	Assembly, Control Piston/Shoe
505	Plug, Hollow Hex.
506	Seal, O'ring
508A	Screw, S.H.C. SAE
508B	Screw, S.H.C. Metric

ITEM NO.	DESCRIPTION
R-U	CONTROL ASSEMBLY
R01A	Block, Control SAE
R01B	Block, Control Metric
R02	Valve, 4-Way Directional
R03	Connector, Electrical
R04	Plug, Orifice
R05A	Screw, S.H.C. SAE
R05B	Screw, S.H.C. Metric
R06	Plug, Hollow Hex.
R07	Seal, O'ring
R08	Plug, Hollow Hex.
R09	Seal, O'ring
R10	Plug, Hollow Hex.
R11	Seal, O'ring
R12	Plug, Hollow Hex.
R13	Seal, O'ring
R14A	Screw, S.H.C. SAE
R14B	Screw, S.H.C. Metric