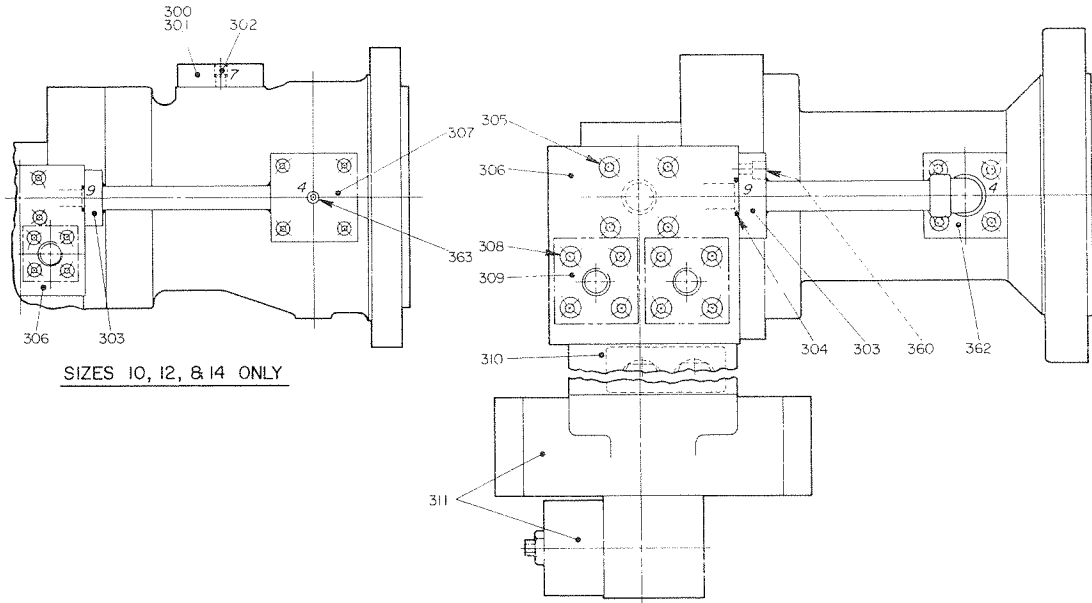
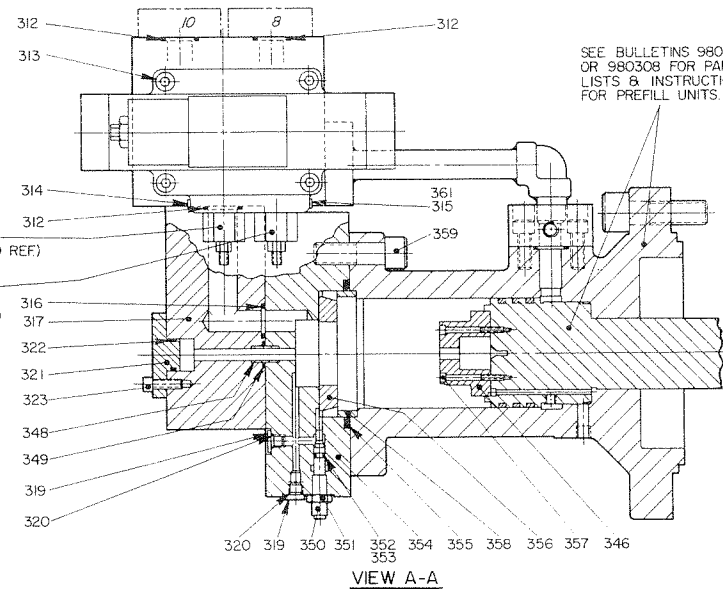


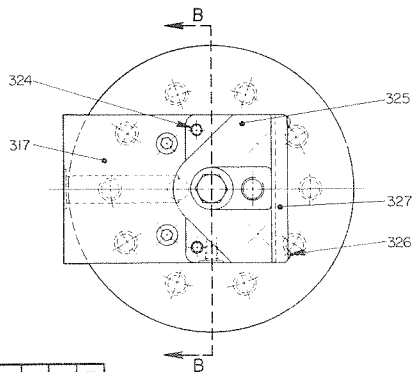
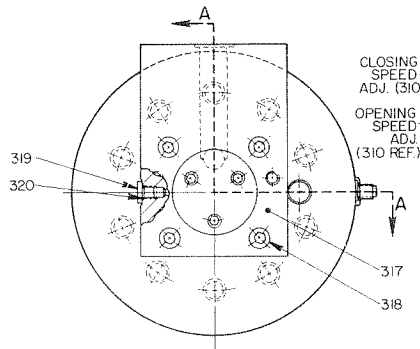
PARTS DRAWING - MODULAR TYPE 4-WAY OPERATORS FOR CYLINDER PREFILL UNITS



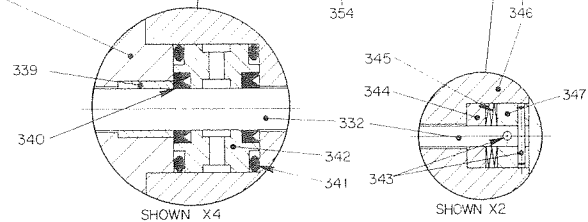
SIZES 10, 12, & 14 ONLY



SEE BULLETINS 980304 OR 980308 FOR PARTS LISTS & INSTRUCTIONS FOR PREFILL UNITS.



VIEW "B-B" WITH OPTIONAL LIMIT SWITCH



TR.	DR. TP.	CH.	App.
			511793
PARTS - MODULAR TYPE 4-WAY OPERATORS FOR CYLINDER PREFILL UNITS			

PARTS LIST

MODULAR-TYPE 4-WAY OPERATORS for CYLINDER PREFILL UNITS

PARTS USED IN THIS ASSEMBLY ARE PER OILGEAR SPECIFICATIONS. USE ORIGINAL OILGEAR PARTS TO ENSURE COMPATIBILITY WITH ASSEMBLY REQUIREMENTS. WHEN ORDERING PARTS, SPECIFY TYPE DESIGNATION, UNIT SERIAL NUMBER OR "L" NUMBER, ITEM NUMBER ON DATA SHEET (DS) AND DATA SHEET NUMBER. ALSO SPECIFY HYDRAULIC FLUID TYPE USED.

ITEM	DESCRIPTION	ITEM	DESCRIPTION
300	Flange, Port 7	332	Rod, Stroke indicator
301	Screw, SHC	333	Screw, Set
302	Plug, Pipe	334	Cam
303	Flange, Port 9	335	Subplate
(S)304	O-ring	336	Screw, Rd. hd.
305	Screw, SHC	337	Screw, Rd. hd.
306	Body, Operator	338	Switch, Micro
307	Flange, Port 4 (10", 12" & 14")	339	Bushing
308	Screw, SHC	(S)340	Packing, Block VEE
309	Flange, Ports 8 & 10	341	O-ring
310	Assy., Flow control valve	342	Retainer, Block VEE packing
311	Valve, Sol. operated 4 way	343	Pin, Roll
(S)312	O-ring	344	Retainer, Indicator rod
313	Screw, SHC	345	Washer, Spring
314	Nameplate, Closing speed adj.	346	Nose, Dashpot
315	Screw, Drive	347	Retainer, Indicator rod
(S)316	O-ring	348	Bearing, Sleeve
317	Block, Adapter	(S)349	O-ring
318	Screw, SHC	350	Screw, Choke
319	Plug, No. 4 SAE	351	Nut, Jam
(S)320	O-ring	352	O-ring
321	Cap, End	353	Ring, Back-up
(S)322	O-ring	354	Head, Rear
323	Screw, SHC	(S)355	O-ring
324	Screw, SHC	356	Sleeve, Dashpot
325	Closure, Limit switch	357	Screw, Nylok SHC
326	Screw, Rd. hd.	358	Ring, Location
327	Cover, Limit switch	359	Screw, SHC
328	Cap, Limit switch end	360	Screw, SHC
(S)329	O-ring	361	Nameplate, Opening speed adj.
330	Bushing, Back-up	362	Flange, Port 4 (8" only)
331	Bushing	363	Plug, Pipe

(S) INCLUDED IN TYPE "A" SEAL KIT.

O-RING SIZES (Cross Section X O.D. - Duro ± 5)

PREFILL SIZE												
ITEM	8"			10"			12" & 14"					
304	1/8	x	1-3/8	90	1/8	x	1-3/8	90	1/8	x	1-3/8	90
312	1/8	x	1-3/8	90	1/8	x	1-3/8	90	1/8	x	1-3/8	90
316	1/8	x	1-1/4	90	1/8	x	1-3/8	90	1/8	x	1-3/8	90
320	1/16	x	1/2	90	1/16	x	1/2	90	1/16	x	1/2	90
322	1/8	x	1-1/8	90	1/8	x	1-1/8	90	1/8	x	1-1/8	90
329	3/32	x	15/16	90	3/32	x	15/16	70	3/32	x	15/16	70
341	1/8	x	1/8	70	1/8	x	1-1/8	70	1/8	x	1-1/8	70
349	3/32	x	7/8	90	3/32	x	7/8	90	3/32	x	7/8	90
355	1/4	x	5-1/4	90	1/4	x	7-1/4	90	1/4	x	7-1/4	90