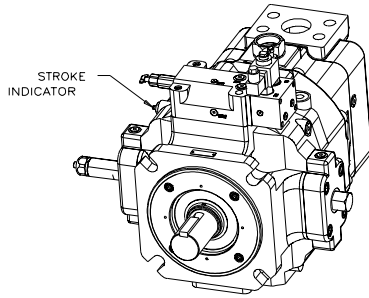


Installation Drawing

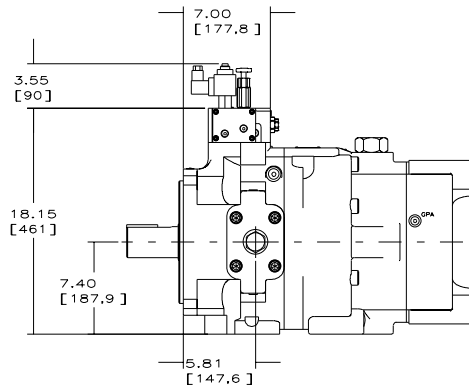
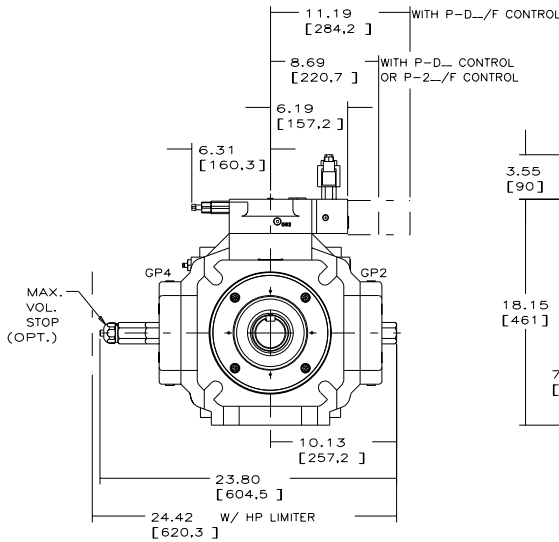
Dual Pressure Compensator Controls

PVV-540-BIU PUMP
WITH P-2__ CONTROL (SHOWN)
AND P-D__ CONTROL

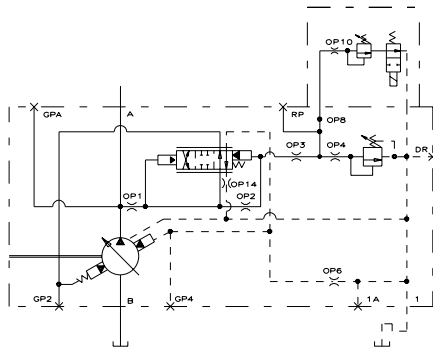


NOTES:

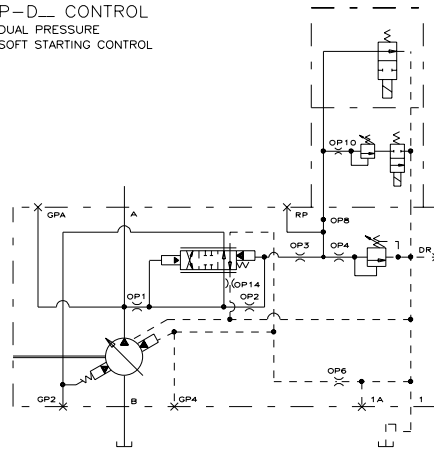
1. PUMPS DESIGNED FOR ONE-WAY SERVICE ARE DIMENSIONED AS SHOWN.
2. THESE UNITS ARE DESIGNED TO RUN CASE FULL OF FLUID AT ALL TIMES. FILL CASE BEFORE STARTING AND CONNECT DRAIN LINES ACCORDINGLY.
3. NUMERICAL DIMENSIONS ARE GIVEN IN INCHES/[MM].
4. NET WEIGHT: P-2__ CONTROL
820 LBS (372 KG) SIDE PORTED (SHOWN)
765 LBS (347 KG) REAR PORTED
P-D__ CONTROL
830 LBS (377 KG) SIDE PORTED
775 LBS (352 KG) REAR PORTED
W/ HP LIMITER ADD 25 LBS (11 KG)
W/ LOAD SENSE ADD 10 LBS (4.5 KG)
5. FOR BASIC PUMP DIMENSIONS SEE: DS-47940A
6. LEFTHAND (CCW) VERSION IS SHOWN. FOR RIGHTHAND (CW) VERSION, THE CONTROL CAPS, VOLUME STOPS, AND STROKE INDICATOR WILL BE ON THE OPPOSITE SIDES, ASSUMING THAT THE OUTLET IS ON THE TOP.



P-2__ CONTROL
DUAL PRESSURE COMPENSATOR CONTROL



P-D__ CONTROL
DUAL PRESSURE
SOFT STARTING CONTROL



519256-006 sh. 5