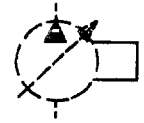
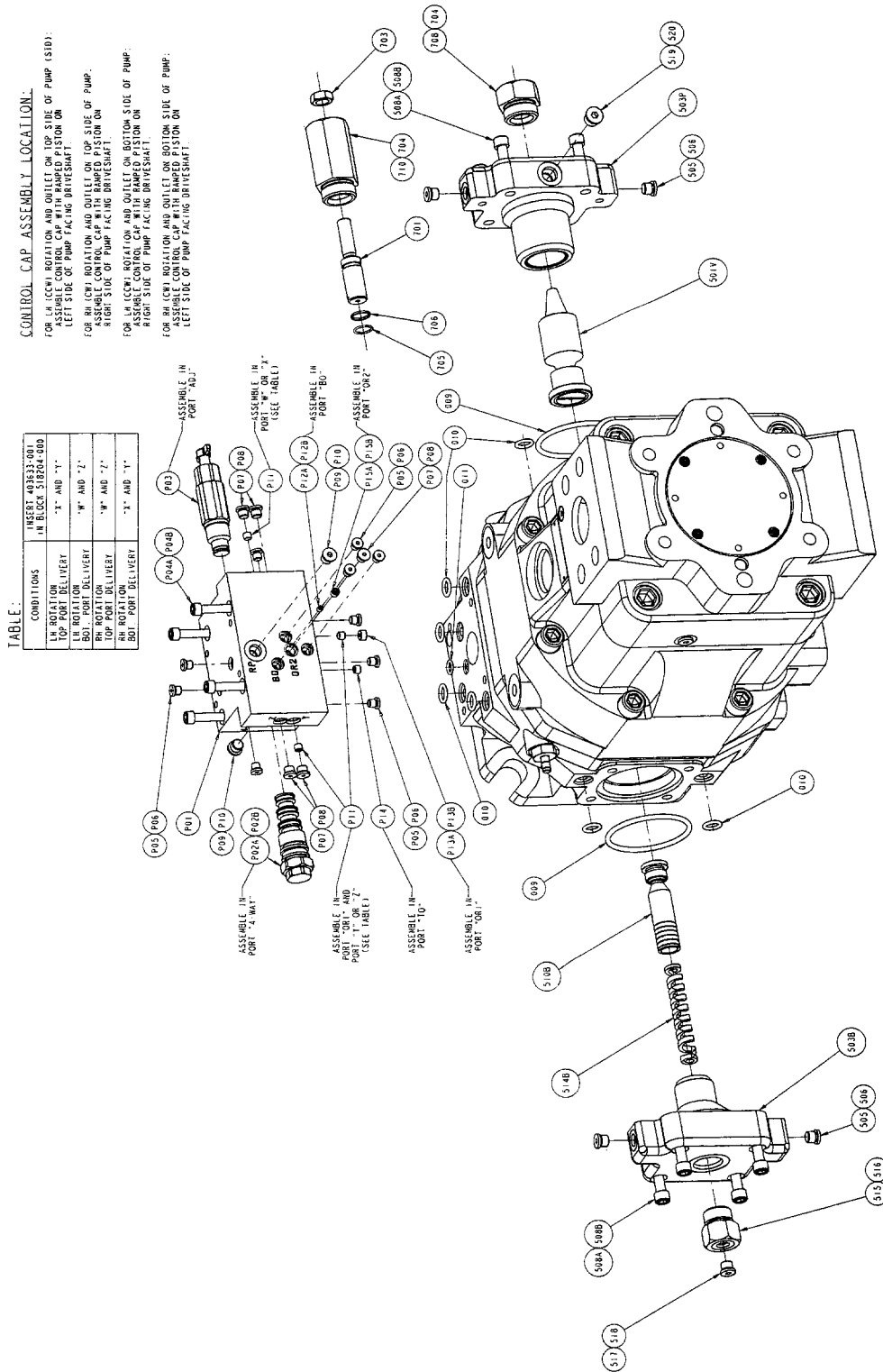


"P-1NN/*" CONTROL



Parts Drawing

Pressure Compensator and Options



CONTROL CAP ASSEMBLY LOCATION:
 FOR LH (CCW) ROTATION AND OUTLET ON TOP SIDE OF PUMP (SID):
 ASSEMBLE CONTROL CAP WITH RAMPED PISTON ON
 LEFT SIDE OF PUMP FACING DRIVESHAFT.
 FOR RH (CW) ROTATION AND OUTLET ON TOP SIDE OF PUMP:
 ASSEMBLE CONTROL CAP WITH RAMPED PISTON ON
 RIGHT SIDE OF PUMP FACING DRIVESHAFT.
 FOR LH (CCW) ROTATION AND OUTLET ON BOTTOM SIDE OF PUMP:
 ASSEMBLE CONTROL CAP WITH RAMPED PISTON ON
 RIGHT SIDE OF PUMP FACING DRIVESHAFT.
 FOR RH (CW) ROTATION AND OUTLET ON BOTTOM SIDE OF PUMP:
 ASSEMBLE CONTROL CAP WITH RAMPED PISTON ON
 LEFT SIDE OF PUMP FACING DRIVESHAFT.

TABLE:

CONDITIONS	INSERT ASSEMBLY IN BLOCK 518204-000
LH ROTATION TOP PORT DELIVERY	"Y" AND "Y"
LH ROTATION BOT PORT DELIVERY	"W" AND "Z"
RH ROTATION TOP PORT DELIVERY	"W" AND "Y"
RH ROTATION BOT PORT DELIVERY	"Y" AND "Y"

518669 sht. 1



**PUMP, VARIABLE DELIVERY
PVV-200 & 250**

MAINTENANCE

2

"P-1NN/*" CONTROL



Parts Drawing

Pressure Compensator and Options

Parts used in this assembly are per Oilgear specifications. Use Oilgear parts to ensure compatability with assembly requirements. When ordering replacement parts, be sure to include pump type designation, serial number, Data Sheet (DS-) number and item number. To assure seal and packing compatibility, specify type of hydraulic fluid used.

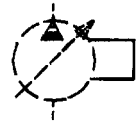
ITEM NO.	DESCRIPTION
700	VOLUME STOP ASSEMBLY
701	Stop, Max. Volume
703	Nut, Lock
704	Seal, O'ring
705	Seal, O'ring
706	Ring, Back-up
708	Plug, Max. Stop
710	Gland, Max. Stop
P-1	CONTROL ASSEMBLY
P01	Block, P-Control
P02A	Valve, 4-Way (Viton) HS4WPP1-802-RP
P02B	Valve, 4-Way (Buna) HS4WPP1-802-RP-B
P03	Valve, Relief HSLR-603-P-50-4
P04A	Screw, S.H.C. SAE
P04B	Screw, S.H.C. Metric
P05	Plug, Hollow Hex.
P06	Seal, O'ring
P07	Plug, Hollow Hex.
P08	Seal, O'ring
P09	Plug, Hollow Hex.
P10	Seal, O'ring
P11	Plug, Pipe
P12	Screw, Orifice Set
P13	Plug, Orifice
P14	Plug, Orifice
P15	Plug, Orifice

ITEM NO.	DESCRIPTION
009	COMMON ASSEMBLY
010	GROUP
011	Seal, O'ring
501V	CONTROL HEAD ASSEMBLY
503B	Assembly, Control Piston/Shoe
503P	Assembly, Bias Control Cap/Sleeve
505	Assembly, Pressure Control Cap/Sleeve
506	Plug, Hollow Hex.
508A	Seal, O'ring
508B	Screw, S.H.C. SAE
510B	Screw, S.H.C. Metric Assembly, Bias Control Piston/Shoe
514B	Spring, Bias Piston
515	Plug, Min. Stop
516	Seal, O'ring
517	Plug, Hollow Hex.
518	Seal, O'ring
519	Plug, Hollow Hex.
520	Seal, O'ring

O'RING and BACK-UP RING SIZE
Cross Section x O.D. Duro ±5

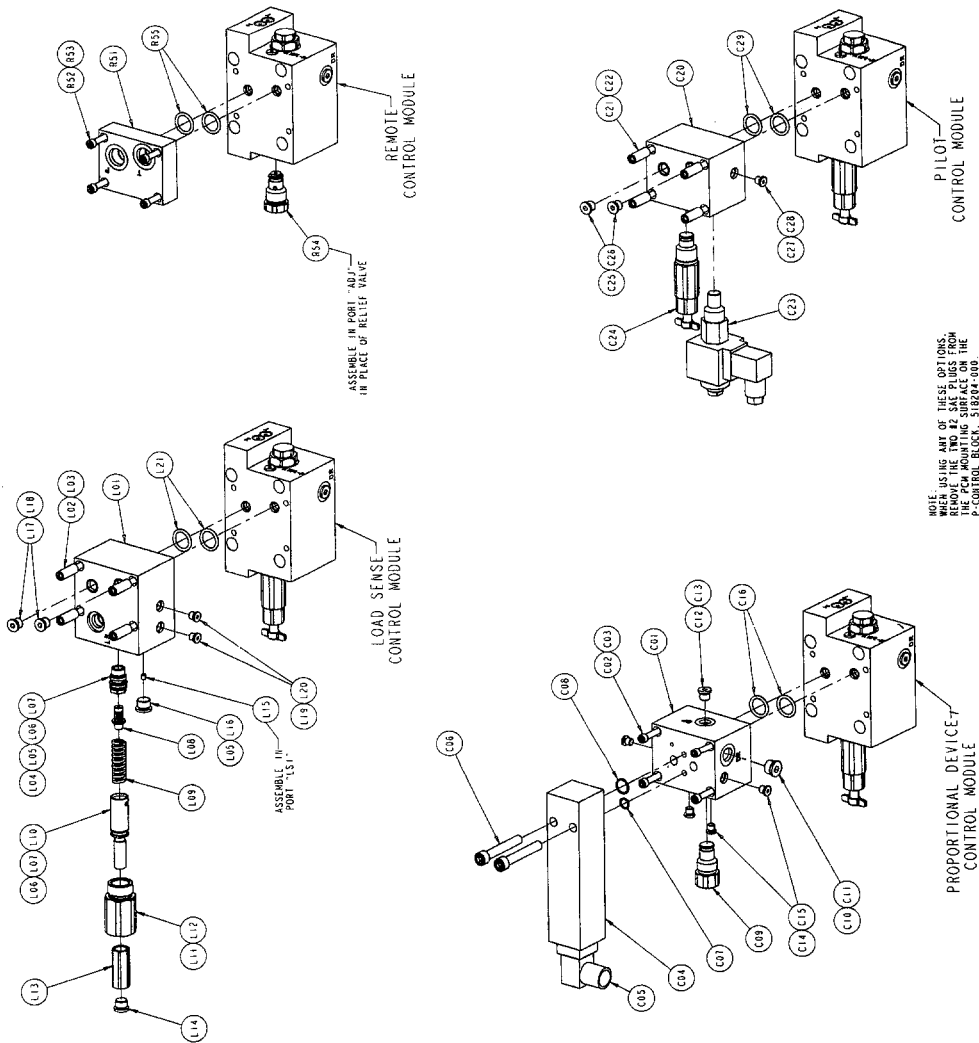
ITEM NO.	SIZE
009	3/16 x 3-7/8
010	1/8 x 3/4
011	3/32 x 9/16
506	904 ARP
520	906 ARP
704	916 ARP
705	1/16 x 3/4
706	016
P06	902 ARP
P08	903 ARP
P10	904 ARP

"P-1NN/*" CONTROL



Parts Drawing

Pressure Compensator Control Options



NOTE:
WHEN USING ANY OF THESE OPTIONS,
THE PUMP MUST BE MOUNTED ON THE
P-CONTROL BLOCK, 518204-000.

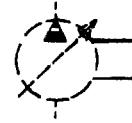
Oilgear

PUMP, VARIABLE DELIVERY PVV-200 & 250

MAINTENANCE

4

"P-1NN/*" CONTROL



Parts List

Pressure Compensator Control Options

Parts used in this assembly are per Oilgear specifications. Use Oilgear parts to ensure compatibility with assembly requirements. When ordering replacement parts, be sure to include pump type designation, serial number, Data Sheet (DS-) number and item number. To assure seal and packing-compatibility, specify type of hydraulic fluid used.

ITEM NO.	DESCRIPTION
C01	P-A & P-B PROPORTIONAL Block, Control Module
C02	Screw, S.H.C.
C03	Washer, Lock
C04	Control, Proportional Pres.
C05	Connector, Elect.
C06	Screw, S.H.C.
C07	Seal, O'ring
C08	Seal, O'ring
C09	Fuse, Contamination
C10	Plug, Hollow Hex.
C11	Seal, O'ring
C12	Plug, Hollow Hex.
C13	Seal, O'ring
C14	Plug, Hollow Hex.
C15	Seal, O'ring
C16	Seal, O'ring

ITEM NO.	DESCRIPTION
L01	LOAD SENSE OPTIONS
L02	Block, Load Sense
F03	Screw, Stacking
F04	Washer, Lock
F05	Seat, Load Sense
F06	Seal, O'ring
F07	Seal, O'ring
F08	Seal, O'ring
F09	Spool, Load Sense
F10	Spring, Load Sense
F11	Screw, Load Sense Adj.
F12	Bonnet, Load Sense
F13	Seal, O'ring
F14	Nut, Coupling
F15	Plug, Hollow Hex.
F16	Screw, Set
F17	Plug, Hollow Hex.
F18	Plug, Hollow Hex.
F19	Seal, O'ring
F20	Plug, Hollow Hex.
F21	Seal, O'ring

O'RING and BACK-UP RING SIZE
Cross Section x O.D. Duro ±5

ITEM NO.	SIZE
F05	906 ARP
F06	1/16 x 3/4
F07	016
F12	912 ARP
F18	904 ARP
F20	902 ARP
F21	1/8 x 1
C07	1/16 x 1/2
C08	1/16 x 11/16
C11	906 ARP
C13	904 ARP
C15	902 ARP
C16	1/8 x 1
C26	904 ARP
C28	902 ARP
C29	1/8 x 1

ITEM NO.	DESCRIPTION
C20	PILOT CONTROL PARTS
C21	Block, HSPCM601-M-1-C-BK
C22	Screw, Stacking
C23	Washer, Lock
C24	Valve, Two-Way
C25	Valve, Relief
C26	HSLR603-P-50-4
C27	Plug, Hollow Hex.
C28	Seal, O'ring
C29	Seal, O'ring

ITEM NO.	DESCRIPTION
R51	REMOTE CONTROL
R52	Block, Remote Control
R53	Screw, S.H.C.
R54	Washer, Lock
R55	Plug, Fixed Flow
	HSHFF600-000
	Seal, O'ring