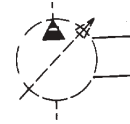




# PUMP, VARIABLE DELIVERY PVV-540 "B1" with "VM" CONTROL

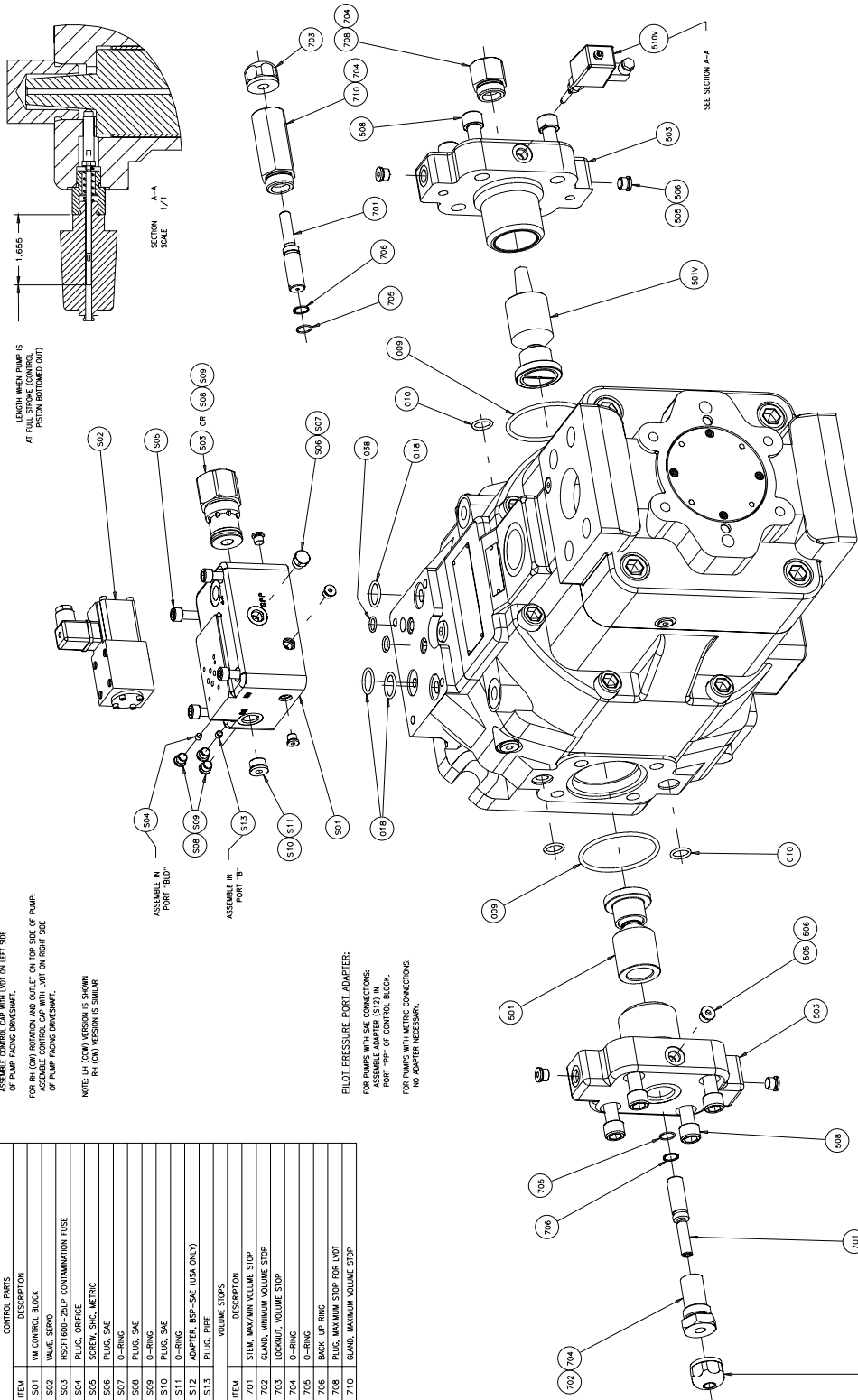
MAINTENANCE

1



Parts Drawing

Servo Valve Control



CONTROL CAP ASSEMBLY LOCATION:  
FOR LH (CW) ROTATION AND OUTLET ON TOP SIDE OF PUMP (STD):  
ASSEMBLE CONTROL CAP WITH LUT ON LEFT SIDE  
OF PUMP FACING DIRECTION.  
FOR RH (CCW) ROTATION AND OUTLET ON TOP SIDE OF PUMP:  
ASSEMBLE CONTROL CAP WITH LUT ON RIGHT SIDE  
OF PUMP FACING DIRECTION.

NOTE: LH (CCW) VERSION IS SHOWN  
IN (CP) VERSION IS SIMILAR

PILOT PRESSURE PORT ADAPTER:  
FOR PUMPS WITH SAE CONNECTIONS:  
ASSEMBLE ADAPTER (S17) IN  
PORT "P" OF CONTROL BLOCK.  
FOR PUMPS WITH METRIC CONNECTIONS:  
NO ADAPTER NECESSARY.

519258 sht. 1

COMMON PARTS	
ITEM	DESCRIPTION
501	ASSY. CONTROL PISTON / SHADE
503	ASSY. CONTROL CAP / SELEDE
505	PLUG, SAE
506	O-RING
508	SCREW, SHC, METRIC
509	LUT ASSEMBLY
510	O-RING
511	O-RING
512	O-RING
513	O-RING
502	ASSY. CONTROL PISTON / SHADE FOR LUT
504	ASSY. CONTROL CAP WITH LUT ON LEFT SIDE
507	ASSY. CONTROL CAP WITH LUT ON RIGHT SIDE
508	PLUG, SAE
509	PLUG, SAE
510	PLUG, SAE
511	PLUG, SAE
512	PLUG, SAE
513	PLUG, SAE
701	STEM, MAX/MIN VOLUME STOP
702	GLAND, MINIMUM VOLUME STOP
703	GLAND, MAXIMUM VOLUME STOP
704	O-RING
705	O-RING
706	BACK-UP RING
708	PLUG, MAXIMUM STOP FOR LUT
710	GLAND, MAXIMUM VOLUME STOP
701	STEM, MAX/MIN VOLUME STOP
702	GLAND, MINIMUM VOLUME STOP
703	GLAND, MAXIMUM VOLUME STOP
704	O-RING
705	O-RING
706	BACK-UP RING
708	PLUG, MAXIMUM STOP FOR LUT
710	GLAND, MAXIMUM VOLUME STOP

Telephone: (414) 327-1700  
Fax: (414) 327-0532

OILGEAR  
2300 So. 51st. Street  
Milwaukee, WI USA 53219

Reissued: Oct., 2002  
DS 947729-A