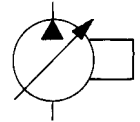




**PUMP, VARIABLE DELIVERY  
PVV-540 "B1"  
with  
"P-2--" or "P-D--" CONTROL**

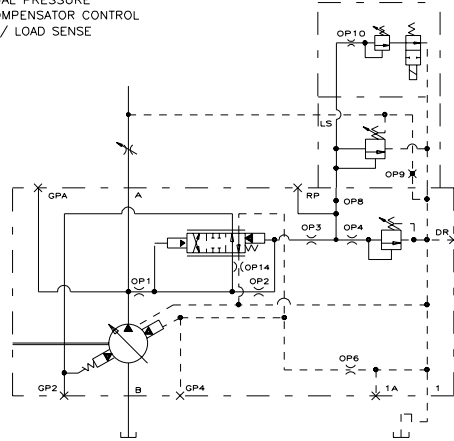
**ENGINEERING**

**1**

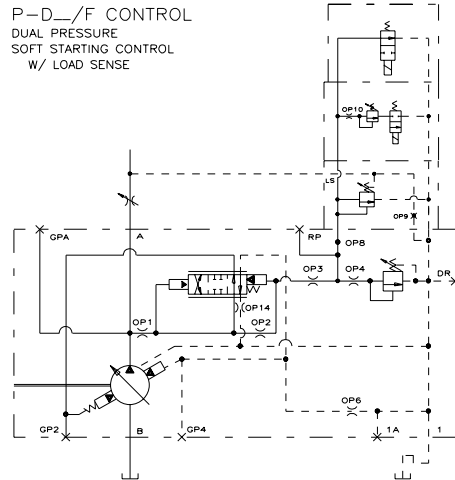


**Installation Drawing Dual Pressure Compensator Controls, with Load Sense and/or Hp Limit**

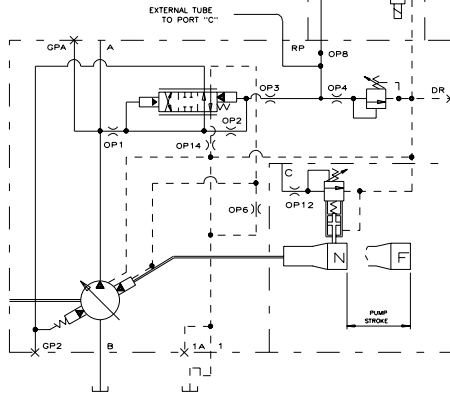
**P-2\_/F CONTROL**  
DUAL PRESSURE  
COMPENSATOR CONTROL  
W/ LOAD SENSE



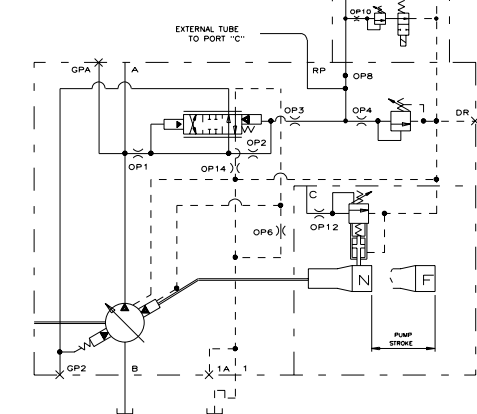
**P-D\_/F CONTROL**  
DUAL PRESSURE  
SOFT STARTING CONTROL  
W/ LOAD SENSE



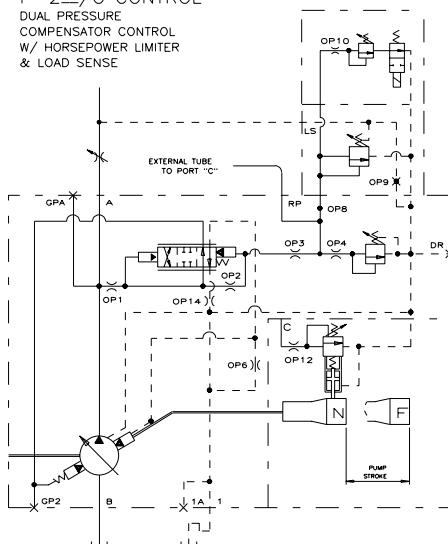
**P-2\_/H CONTROL**  
DUAL PRESSURE  
COMPENSATOR CONTROL  
W/ HORSEPOWER LIMITER



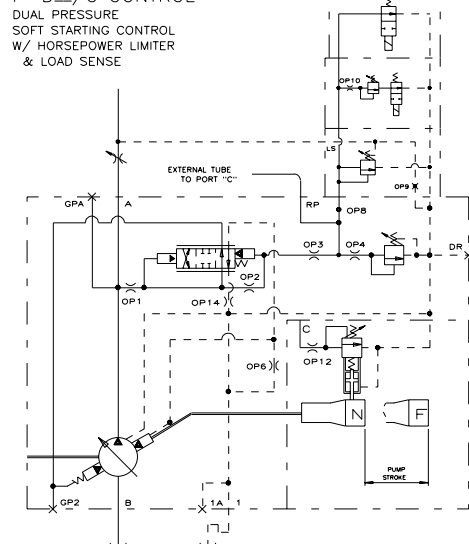
**P-D\_/H CONTROL**  
DUAL PRESSURE  
SOFT STARTING CONTROL  
W/ HORSEPOWER LIMITER



**P-2\_/G CONTROL**  
DUAL PRESSURE  
COMPENSATOR CONTROL  
W/ HORSEPOWER LIMITER  
& LOAD SENSE



**P-D\_/G CONTROL**  
DUAL PRESSURE  
SOFT STARTING CONTROL  
W/ HORSEPOWER LIMITER  
& LOAD SENSE

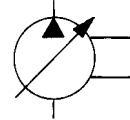


519256-306 sh. 6

Telephone: (414) 327-1700  
Fax: (414) 327-0532

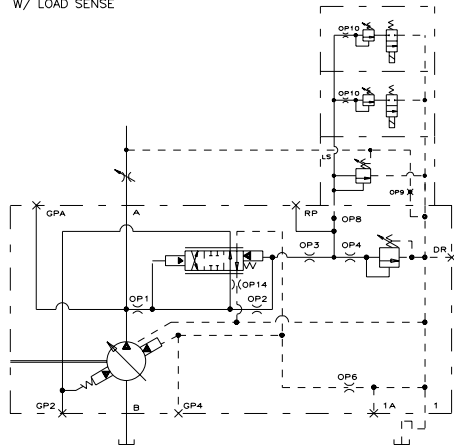
**OILGEAR**  
2300 So. 51st. Street  
Milwaukee, WI USA 53219

Issued: Oct., 2002  
**DS-M47516**

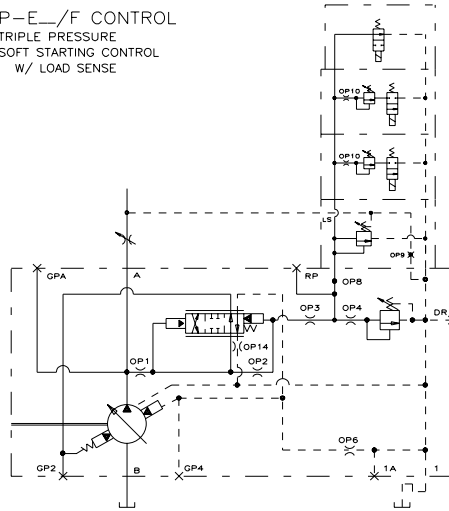


**Installation Drawing Triple Pressure Compensator Controls, with Load Sense and/or HP Limit**

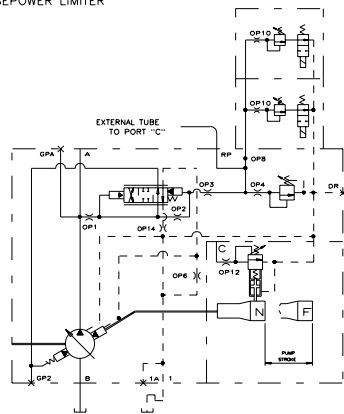
**P-3\_/F CONTROL**  
TRIPLE PRESSURE  
COMPENSATOR CONTROL  
W/ LOAD SENSE



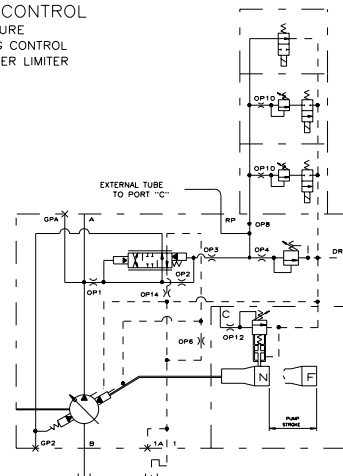
**P-E\_/F CONTROL**  
TRIPLE PRESSURE  
SOFT STARTING CONTROL  
W/ LOAD SENSE



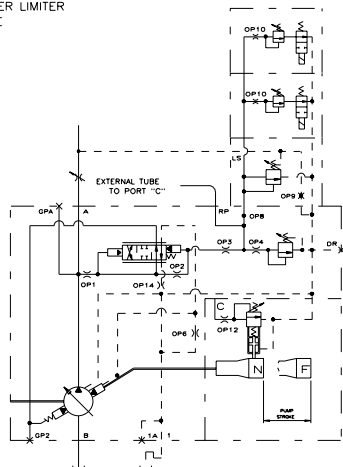
**P-3\_/H CONTROL**  
TRIPLE PRESSURE  
COMPENSATOR CONTROL  
W/ HORSEPOWER LIMITER



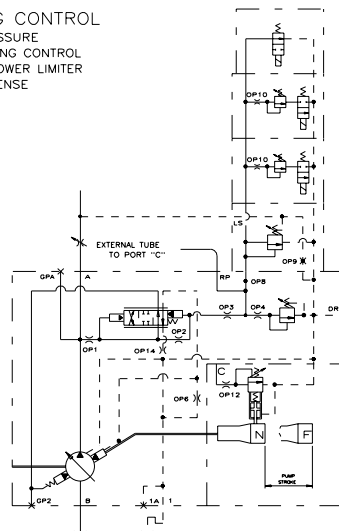
**P-E\_/H CONTROL**  
TRIPLE PRESSURE  
SOFT STARTING CONTROL  
W/ HORSEPOWER LIMITER



**P-3\_/G CONTROL**  
TRIPLE PRESSURE  
COMPENSATOR CONTROL  
W/ HORSEPOWER LIMITER  
& LOAD SENSE



**P-E\_/G CONTROL**  
TRIPLE PRESSURE  
SOFT STARTING CONTROL  
W/ HORSEPOWER LIMITER  
& LOAD SENSE



519256-306 sh. 8