

DROP-IN-PLACE PVV CONVERSION FOR D-PUMP

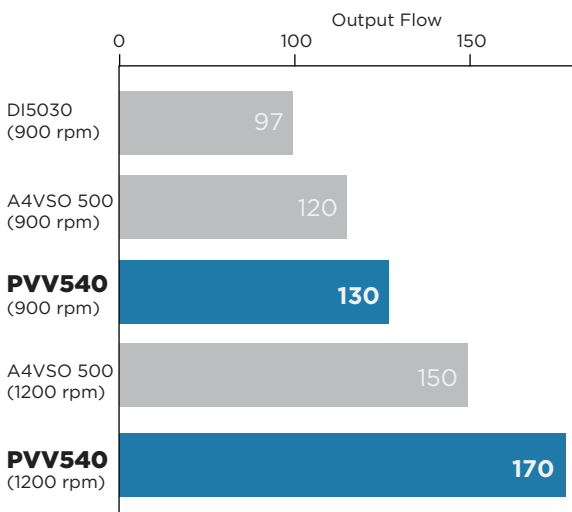
*Greatly Increase Productivity
Reduce Energy Consumption*



MAIN ADVANTAGE

- TRUE Direct Drop-In Replacement – Shaft location, main pressure port locations, main and auxiliary pilot flows, filtration functions, and “1-Way” or “2-Way” functionality all maintained on the pump skid.
- Modular construction for ease of service and future upgrade of piping to modern standards.
- Cost effective and fast to repair. Can be field rebuilt in just a few hours. Quick factory repair turn-around.
- Industry-leading Oilgear axial piston pump technology with no B-10 life issues nor bearing flush required.
- For use with ISO VG32 to VG150 fluids
- Operation at 900 rpm on original legacy motor or 1200 rpm for greatly reduced cycle time.
- VFD compatible.
- Worldwide availability of application engineering, field service, spare parts, and factory repair services.

PERFORMANCE COMPARISON



Note: System evaluation is required to confirm key application details such as fluid cleanliness, viscosity, reservoir mounting details, suction conditions, control system integration, etc.

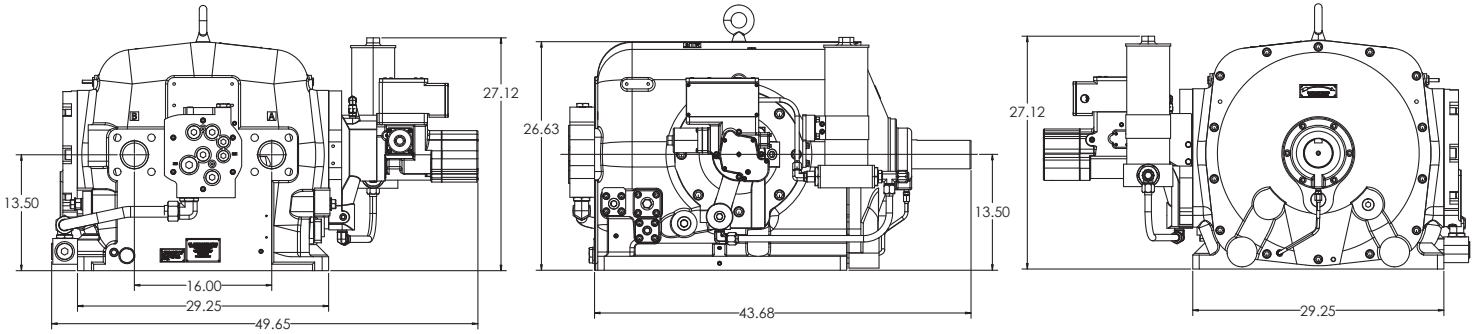
FLUID CLEANLINESS

D-Pump	21/19/16
PVV Pump Skid	20/18/15

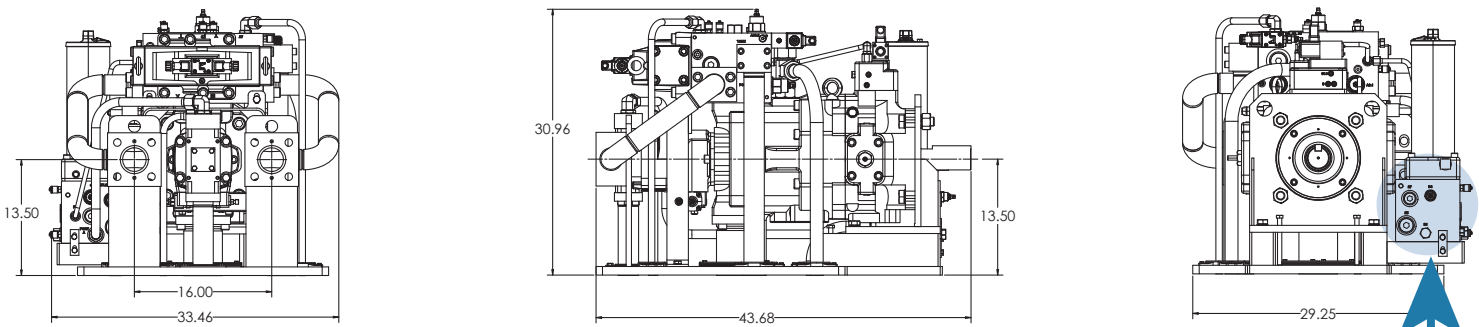
RECOMMENDED VISCOSITY FOR INDUSTRIAL APPLICATIONS

D-Pump Size 35-60	ISO 68
D-Pump Size 100+	ISO 100
PVV Pump Skid	ISO 46 to 100

Other ISO viscosities may be used, consult Oilgear for consideration / acceptance



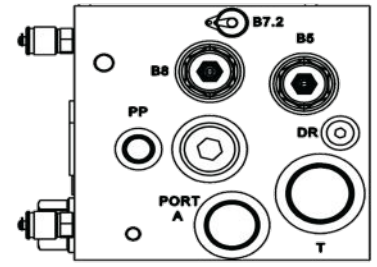
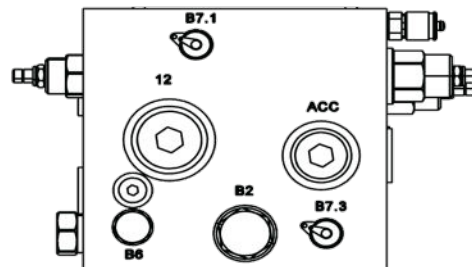
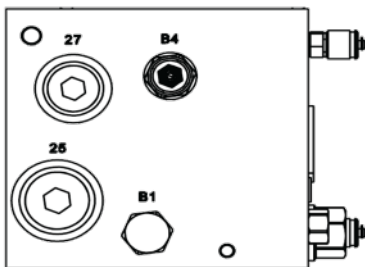
PVV Upgrade Skid



Front View
(Shaft Side)

Side View

Rear View



PVV Retrofit Skid Pilot Manifold Valves & Port Sizing & Description

Number	Description	Sizing	Notes
12	Legacy filter/cooler supply	-20 SAE	D pump legacy, provided plugged
25	Legacy filter/cooler return	-20 SAE	D pump legacy, provided plugged
27	Legacy Pilot Supply	-16 SAE	D pump legacy, provided plugged
ACC	Accumulator port	-16 SAE	Provided plugged, for optional accumulator
PP	Pilot Port	-8 SAE O-ring Boss	Preplumbed from factory
DR	Drain port	-6 SAE O-ring Boss	Preplumbed from factory
A	Inlet from pilot pump	-16 SAE O-ring Boss	Preplumbed from factory
T	Tank port	-20 SAE O-ring Boss	Preplumbed from factory

SKID PERFORMANCE CHART

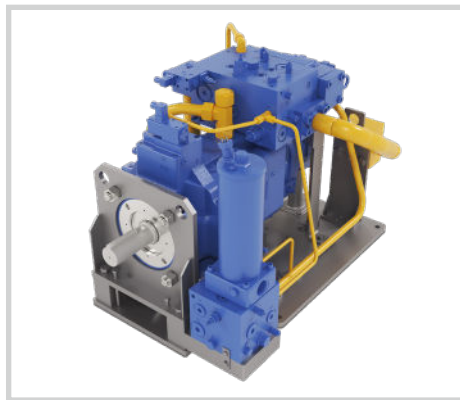
ORIGINAL PUMP				REPLACEMENT SKID				
Model			Rated Pressure PSI	Main Pump	Main Pump Flow Max GPM @900/1200/MAX RPM ³	Pilot Flow Max GPM @ 900/1200 RPM ¹	Rated Pressure PSI	
D-3525	900	25.1	8.5	2500	PVV-540	123/165/206	3750 ⁴	
D-3517		38.4		1700				
D-6025		46.2	11.6	2500			10/14 ²	
D-6050		26.4		5000				
D-3511		58.9	8.5	1100			22/30 ²	
D-6011		104	11.6	1100				
D-6017		71.6		1700				
D-10011		172	22.3	1100				
D-10017		109		1700				
D-10025		69.4	2500	30/40 ²				
D-15025		102	29.5				2500	
D-15030		96.8					3000	
D-15035		74.9					3500	
D-22035		93.2		3500				
D-23030	1200	171	39.3	3000	123/165/206	30/40 ²		
D-20035		128		3500				
DN-35030		171		3000				
DN-35035		162		3500				

¹ Flow & pressure adjustable independent pilot flow pump, original D pump is fixed pilot flow integral to main pump

² Other pilot flow rates available

³ Pumps can run on higher RPM motors or on a variable frequency drive for much higher flow/production rates after Oilgear engineering review

⁴ 5000 PSI option available



OILGEAR FIELD SERVICE

Bringing Customers from Reactive to Proactive



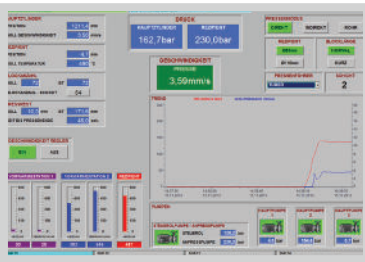
Press Audit

- Health Check of electrohydraulic system
- Diagnostic readings of pressures & flows of system
- Analyze hydraulic components condition
- Fluid sample taken and condition analyzed
- Detailed report with findings & suggested actions



Preventative Maintenance Program

- Analyze and repair leaks
- Analyze power system condition
- Review hydraulic system maintenance with facility personnel
- Review best practices with maintenance personnel
- Multi year agreement



Press Tune

- Return press to as efficient OEM operation as system will allow
- Check pumps, valve, and actuators & adjust as needed
- Check HMI for alerts / codes and address as needed
- Resolve system shocks / pressure spikes via adjustments
- Review hydraulic system maintenance with facility personnel
- Optimize press cycle for production and machine life



Hydraulics Training

- On-site convenience
- Classroom & Hands on training
- Trouble shooting guidance
- Real world training utilizing your schematics & press
- Basic and advanced training available

The Oilgear Company

Global Headquarters

☎ 231-929-1660
✉ ussales@oilgear.com
📍 1424 International Drive, Traverse City, MI 49686
🌐 www.oilgear.com

Oilgear Fremont, Nebraska
905 South Downing St. Fremont, NE 68025 USA
Oilgear Mexicana S.A.
Calle Argentina 3913, Monterrey, 64930, Mexico
Oilgear do Brasil
Av. Ricardo Bassoli Cezare 1009, 13050-080 Campinas, Brazil
Oilgear Towler UK
37 Burley Road, Leeds, LS3 1JT, United Kingdom
Oilgear Towler S.A.S.
5, Allée des Frères Montgolfier, 77183 Croissy-Beaubourg, France
Oilgear Towler GmbH
Im Gotthelf 8, 65795 Hattersheim, Germany
Oilgear Towler S.A.U.
Entidad Zikuñaga, 62, 20120, Hernani, Spain
Oilgear South Korea
167-3 Techno 2-ro, Yuseong-gu, Daejeon City, 34025, South Korea
Oilgear China Co., Ltd.
3rd Floor, Bldg. A, No.3500 Xiupu Road, Shanghai, China

Scan the QR code for more information:

