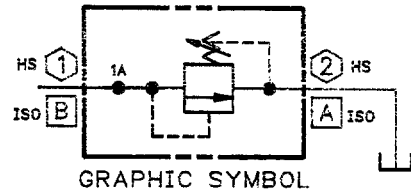
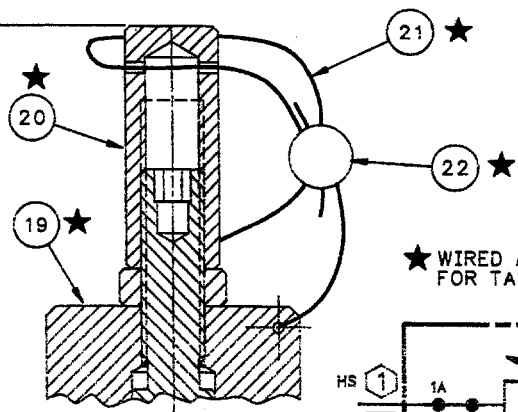
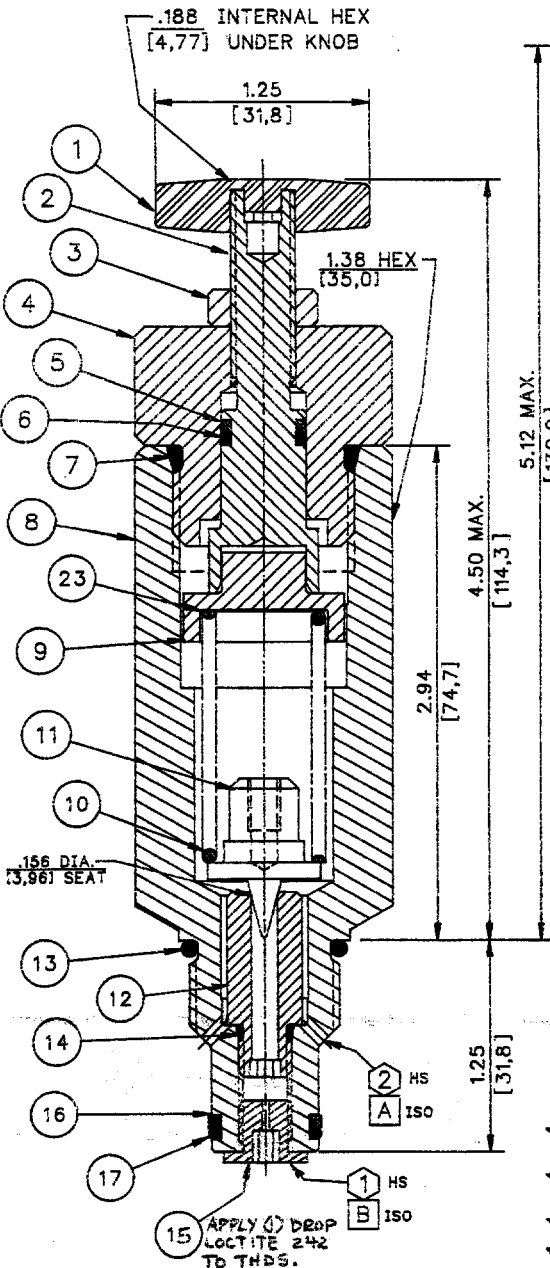


HSMR601-P CONE POPPET DIRECT RELIEF VALVE



ITEM	QTY.	HS CODE NO.	DESCRIPTION	HS PART NO.
1	1	1.25 KB-R	KNOB, RED WING	200004HS01
2	1	HSLR402-AS	ADJUSTING SCREW	300132HS01
3	1	.375-24UNF-JN	JAM NUT	403738-203
4	1	HSMR600-BN	BONNET	300372HS
5	1	012-BUR-T	BACK-UP RING	243375-012
6	1	012-OR-90V	O-RING	238290-012
7	2	912-OR-90V	O-RING	238290-912
8	1	HSMR600-P-BD	BODY	400650HS
9	1	HSMR600-ASA	ADAPTER, ADJUSTING SCREW	200295HS
10	1	SEE BELOW	SPRING	SEE BELOW
11	1	HSMR600-P-P	CONE POPPET	237202
12	1	HSMR600-P-ST-156	SEAT	200296HS01
13	1	910-OR-90V	O-RING	238290-910
14	1	902-OR-90V	O-RING	238290-902
15	1	SEE BELOW	ORIFICE DISK	SEE BELOW
16	1	014-BUR-T	BACK-UP RING	243375-014
17	1	014-OR-90V	O-RING	238290-014
19	1	HSMR600-TBN	BONNET, TAMPER PROOF	300402HS
20	1	HSLR600-TPC	CAP, TAMPER PROOF	300138HS
	1	HSLR600-TRC	CAP, TAMPER RESISTANT	300160HS
21	8 IN.	.035 WIRE	WIRE	403786-020
22	1	HSLR600-LS	LEAD SEAL	200104HS
23	X	.719 OD X .010	SHIM	238401-003

IF VALVE DOES NOT ADJUST UP TO RATED PRESSURE, INSERT SHIMS AS REQUIRED BETWEEN SPRING AND ADAPTER.
 C0720-081-150 APPROX. 24 PSI/.010 SHIM
 9-1206-11 APPROX. 90 PSI/.010 SHIM
 9-1206-21 APPROX. 162 PSI/.010 SHIM

ITEM 10			
	C0720-081-150	SPRING, 50-700 PSI	200321HS
	9-1206-11	SPRING, 50-2000 PSI	200312HS
	9-1206-21	SPRING, 50-3500 PSI	200320HS
	9-1206-21	SPRING, 50-5000 PSI	200320HS

ITEM 15			
	HP-2-.032	ORIFICE PLUG	300029HS03
	HP-2-.040	ORIFICE PLUG	300029HS04
	HP-2-.052	ORIFICE PLUG	300029HS05
	HP-2-.062	ORIFICE PLUG	300029HS06

INCHES
[mm]

ISSUE DATE :

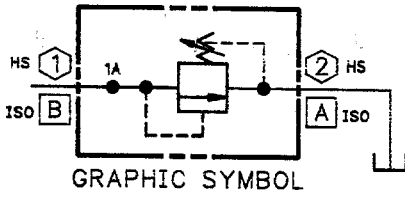


HSMR601-P
SH 1 OF 2

HYDRO-STACK

DATE 10-19-97
 BY C.J.T.
 CH. C.J.T.
 TITLE HSMR601-P CONE POPPET DIRECT RELIEF VALVE
 401033HS SH 1 OF 2

HOW TO ORDER



HSMR601-P-

PRESSURE RANGE		
50-700 PSI	{3,4-48,0 BAR}	07
50-2000 PSI	{3,4-138,0 BAR}	20
50-3500 PSI	{3,4-241,0 BAR}	35
50-5000 PSI	{3,4-345,0 BAR}	50

ORIFICE DIA.	
NO ORIFICE DISK	0
	1
	2
.032 {0,81}	3
.040 {1,02}	4
.055 {1,40}	5
.062 {1,57}	6

PRESSURE SETTING (PSI)
 EXAMPLE:
 30=3000 PSI

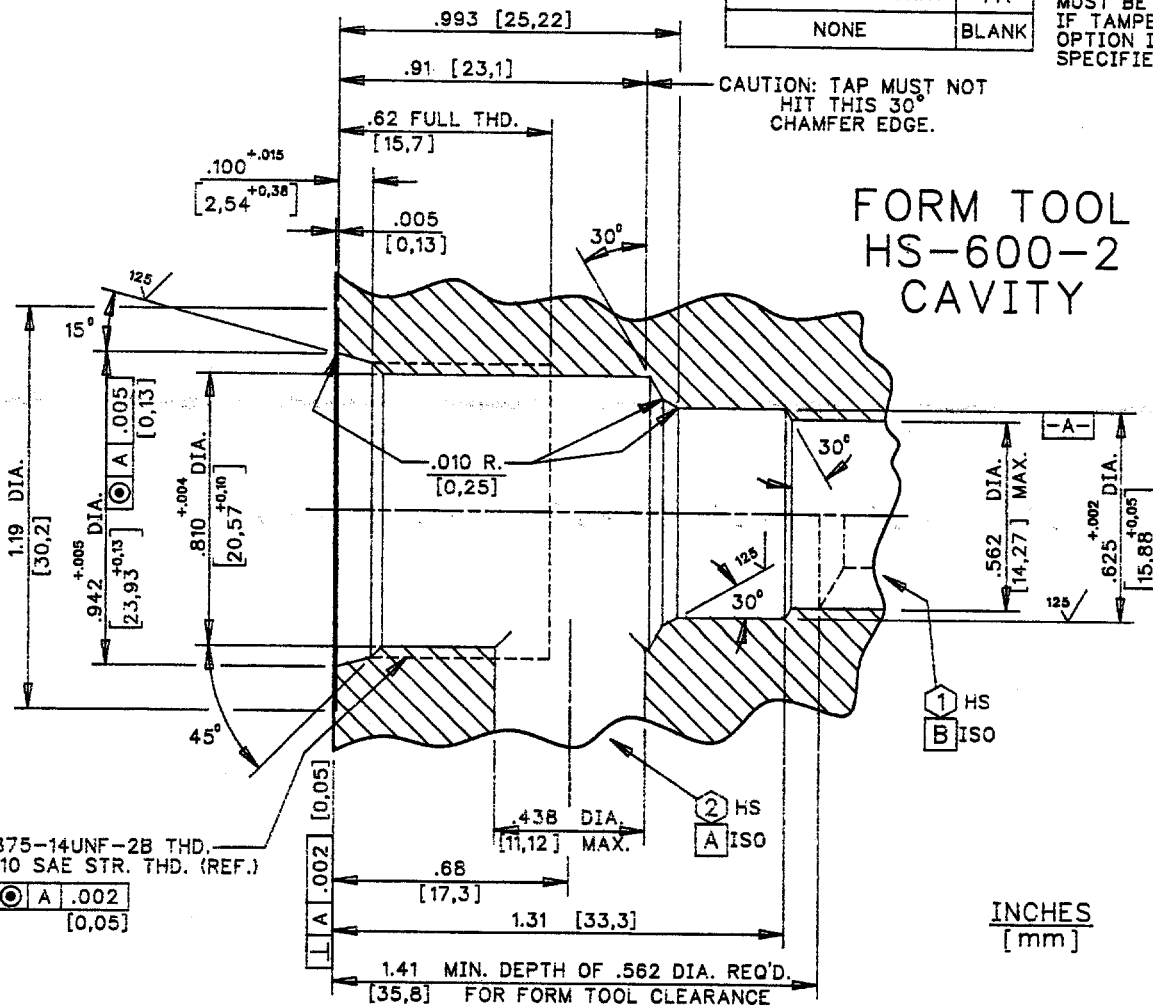
FLOW SETTING (GPM)
 EXAMPLE:
 1.5=1.5 GPM

- NOTE:
 1) 5000 PSI [345 BAR] MAXIMUM SERVICE PRESSURE
 2) FOR REPLACEMENT SEAL KIT ORDER: HSK-600-D
 3) RATED 4.0 GPM [15,1 LPM] AT 100 PSI [6,9 BAR] ΔP WITHOUT STABILIZING ORIFICE.

OPTIONS	
TAMPER PROOF	TP
TAMPER RESISTANT	TR
NONE	BLANK

THIS INFORMATION MUST BE PROVIDED IF TAMPER-PROOF OPTION IS SPECIFIED.

HYDRO-STACK



DATE	10-8-92
DR.	CIT
CHK.	CIT
APP.	CIT
DATE	9-2
TITLE	
HSMR601-P	
CONE POPPET DIRECT RELIEF VALVE	
Oilgear MIL WAUWEE, WI	
401033HS	
SH 1	
OF 2	

ISSUE DATE :

Oilgear

HSMR601-P
 SH 2 OF 2